

## Product datasheet for **TA338198**

### CH25H Rabbit Polyclonal Antibody

#### Product data:

Product Type:	Primary Antibodies
Applications:	WB
Recommended Dilution:	WB
Reactivity:	Human
Host:	Rabbit
Isotype:	IgG
Clonality:	Polyclonal
Immunogen:	The immunogen for anti-CH25H antibody is: synthetic peptide directed towards the C-terminal region of Human CH25H. Synthetic peptide located within the following region: VTLLGCHPLTTLTFHVNIIWLSVEDHSGYNFPWSTHRLVPGWYGGVHH
Formulation:	Liquid. Purified antibody supplied in 1x PBS buffer with 0.09% (w/v) sodium azide and 2% sucrose. <i>Note that this product is shipped as lyophilized powder to China customers.</i>
Purification:	Affinity Purified
Conjugation:	Unconjugated
Storage:	Store at -20°C as received.
Stability:	Stable for 12 months from date of receipt.
Predicted Protein Size:	32 kDa
Gene Name:	cholesterol 25-hydroxylase
Database Link:	<a href="#">NP_003947</a> <a href="#">Entrez Gene 9023 Human O95992</a>
Background:	This is an intronless gene that is involved in cholesterol and lipid metabolism. The encoded protein is a membrane protein and contains clusters of histidine residues essential for catalytic activity. Unlike most other sterol hydroxylases, this enzyme is a member of a small family of enzymes that utilize diiron cofactors to catalyze the hydroxylation of hydrophobic substrates.
Synonyms:	C25H



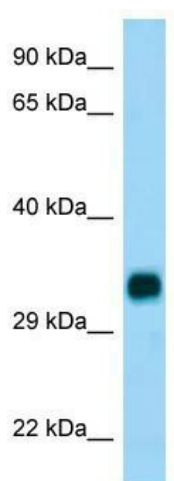
[View online »](#)

**Note:** Immunogen Sequence Homology: Human: 100%; Pig: 93%; Rat: 93%; Horse: 93%; Mouse: 93%; Bovine: 93%; Rabbit: 93%; Guinea pig: 93%; Zebrafish: 86%; Goat: 83%; Yeast: 75%

**Protein Families:** Transmembrane

**Protein Pathways:** Primary bile acid biosynthesis

### Product images:



WB Suggested Anti-CH25H Antibody; Titration: 1.0 ug/ml; Positive Control: Fetal Brain