

## Product datasheet for **TA338197**

### PSTPIP1 Rabbit Polyclonal Antibody

#### Product data:

Product Type:	Primary Antibodies
Applications:	WB
Recommended Dilution:	WB
Reactivity:	Human
Host:	Rabbit
Isotype:	IgG
Clonality:	Polyclonal
Immunogen:	The immunogen for anti-PSTPIP1 antibody is: synthetic peptide directed towards the N-terminal region of Human PSTPIP1. Synthetic peptide located within the following region: LLRQRAQAEERYGKELVQIARKAGGQTEINSLRASFDLQKQMMENVGSSH
Formulation:	Liquid. Purified antibody supplied in 1x PBS buffer with 0.09% (w/v) sodium azide and 2% sucrose. <i>Note that this product is shipped as lyophilized powder to China customers.</i>
Purification:	Affinity Purified
Conjugation:	Unconjugated
Storage:	Store at -20°C as received.
Stability:	Stable for 12 months from date of receipt.
Predicted Protein Size:	43 kDa
Gene Name:	proline-serine-threonine phosphatase interacting protein 1
Database Link:	<a href="#">NP_003969</a> <a href="#">Entrez Gene 9051 Human</a> <a href="#">O43586</a>
Background:	The protein encoded by this gene binds to the cytoplasmic tail of CD2, an effector of T cell activation and adhesion, negatively affecting CD2-triggered T cell activation. The encoded protein appears to be a scaffold protein and a regulator of the actin cytoskeleton. It has also been shown to bind ABL1, PTPN18, WAS, CD2AP, and PTPN12. Mutations in this gene are a cause of PAPA syndrome.
Synonyms:	CD2BP1; CD2BP1L; CD2BP1S; H-PIP; PAPAS; PSTPIP



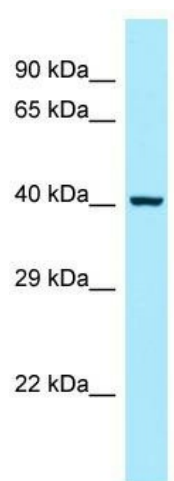
[View online »](#)

**Note:** Immunogen Sequence Homology: Dog: 100%; Pig: 100%; Rat: 100%; Horse: 100%; Human: 100%; Mouse: 100%; Bovine: 100%; Guinea pig: 100%; Zebrafish: 92%

**Protein Families:** Druggable Genome

**Protein Pathways:** NOD-like receptor signaling pathway

### Product images:



Host: Rabbit; Target Name: PSTPIP1; Sample Tissue: NCI-H226 Whole Cell lysates; Antibody Dilution: 1.0 ug/ml