

Product datasheet for **TA338196**

AMPD2 Rabbit Polyclonal Antibody

Product data:

Product Type:	Primary Antibodies
Applications:	WB
Recommended Dilution:	WB
Reactivity:	Human
Host:	Rabbit
Isotype:	IgG
Clonality:	Polyclonal
Immunogen:	The immunogen for anti-AMPD2 antibody is: synthetic peptide directed towards the N-terminal region of Human AMPD2. Synthetic peptide located within the following region: VVRALFIREKYMALSLQSFCTTRRYLQQLAEKPLETRTYEQGPDTPVSA
Formulation:	Liquid. Purified antibody supplied in 1x PBS buffer with 0.09% (w/v) sodium azide and 2% sucrose. <i>Note that this product is shipped as lyophilized powder to China customers.</i>
Purification:	Affinity Purified
Conjugation:	Unconjugated
Storage:	Store at -20°C as received.
Stability:	Stable for 12 months from date of receipt.
Predicted Protein Size:	101 kDa
Gene Name:	adenosine monophosphate deaminase 2
Database Link:	NP_004028 Entrez Gene 271 Human Q01433
Background:	Adenosine monophosphate deaminase-2 (EC 3.5.4.6) catalyzes the deamination of AMP to IMP and plays an important role in the purine nucleotide cycle.
Synonyms:	PCH9; SPG63
Note:	Immunogen Sequence Homology: Dog: 100%; Pig: 100%; Horse: 100%; Human: 100%; Bovine: 100%; Rabbit: 100%; Rat: 93%; Mouse: 93%; Guinea pig: 93%

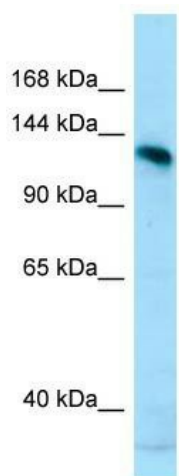


[View online »](#)

Protein Families: Druggable Genome

Protein Pathways: Metabolic pathways, Purine metabolism

Product images:



WB Suggested Anti-AMPD2 Antibody; Titration:
1.0 ug/ml; Positive Control: MCF7 Whole Cell