

## Product datasheet for **TA338192**

### **HNF4 gamma (HNF4G) Rabbit Polyclonal Antibody**

#### **Product data:**

<b>Product Type:</b>	Primary Antibodies
<b>Applications:</b>	WB
<b>Recommended Dilution:</b>	WB
<b>Reactivity:</b>	Human
<b>Host:</b>	Rabbit
<b>Isotype:</b>	IgG
<b>Clonality:</b>	Polyclonal
<b>Immunogen:</b>	The immunogen for anti-HNF4G antibody: synthetic peptide directed towards the C terminal of human HNF4G. Synthetic peptide located within the following region: QDPLTGQTILLGPMSTLVHADQISTPETPLPSPQGSQEQYKIAANQAS
<b>Formulation:</b>	Liquid. Purified antibody supplied in 1x PBS buffer with 0.09% (w/v) sodium azide and 2% sucrose. <i>Note that this product is shipped as lyophilized powder to China customers.</i>
<b>Purification:</b>	Affinity Purified
<b>Conjugation:</b>	Unconjugated
<b>Storage:</b>	Store at -20°C as received.
<b>Stability:</b>	Stable for 12 months from date of receipt.
<b>Predicted Protein Size:</b>	50 kDa
<b>Gene Name:</b>	hepatocyte nuclear factor 4 gamma
<b>Database Link:</b>	<a href="#">NP_004124</a> <a href="#">Entrez Gene 3174 Human Q14541</a>
<b>Background:</b>	Transcription factor. Has a lower transcription activation potential than HNF4-alpha.
<b>Synonyms:</b>	NR2A2; NR2A3
<b>Note:</b>	Immunogen Sequence Homology: Dog: 100%; Pig: 100%; Rat: 100%; Horse: 100%; Human: 100%; Mouse: 100%; Bovine: 100%; Rabbit: 100%; Guinea pig: 100%
<b>Protein Families:</b>	Druggable Genome, Nuclear Hormone Receptor, Transcription Factors

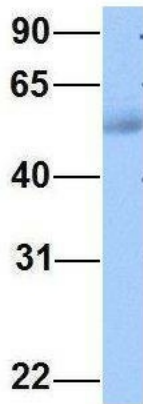


[View online »](#)

Protein Pathways: Maturity onset diabetes of the young

**Product images:**

WB Suggested Anti-HNF4G Antibody Titration: 0.2-1 ug/ml; Positive Control: MCF7 cell lysate

**HNF4G**

Rabbit Anti-HNF4G  
Sample Type: Human Adult Placenta  
Antibody Concentration: 1ug/mL

Host: Rabbit; Target Name: HNF4G; Sample Tissue: Human Adult Placenta; Antibody Dilution: 1.0 ug/ml