

Product datasheet for **TA338190**

S1PR2 Rabbit Polyclonal Antibody

Product data:

Product Type:	Primary Antibodies
Applications:	WB
Recommended Dilution:	WB
Reactivity:	Human
Host:	Rabbit
Isotype:	IgG
Clonality:	Polyclonal
Immunogen:	The immunogen for anti-S1PR2 antibody is: synthetic peptide directed towards the N-terminal region of Human S1PR2. Synthetic peptide located within the following region: MGSLYSEYLNPNKVQEHYNYTKETLETQETTSRQVASAFIVILCCAIVVE
Formulation:	Liquid. Purified antibody supplied in 1x PBS buffer with 0.09% (w/v) sodium azide and 2% sucrose. <i>Note that this product is shipped as lyophilized powder to China customers.</i>
Purification:	Affinity Purified
Conjugation:	Unconjugated
Storage:	Store at -20°C as received.
Stability:	Stable for 12 months from date of receipt.
Predicted Protein Size:	38 kDa
Gene Name:	sphingosine-1-phosphate receptor 2
Database Link:	NP_004221 Entrez Gene 9294 Human O95136
Background:	This gene encodes a member of the G protein-coupled receptors, as well as the EDG family of proteins. This protein participates in sphingosine 1-phosphate-induced cell proliferation, survival, and transcriptional activation.
Synonyms:	AGR16; EDG-5; EDG5; Gpcr13; H218; LPB2; S1P2
Note:	Immunogen Sequence Homology: Human: 100%; Rat: 93%; Dog: 86%; Pig: 86%; Mouse: 86%; Guinea pig: 86%; Horse: 79%

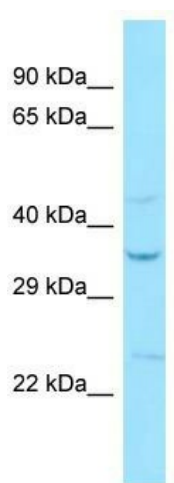


[View online »](#)

Protein Families: Druggable Genome, GPCR, Transmembrane

Protein Pathways: Neuroactive ligand-receptor interaction

Product images:



Host: Rabbit; Target Name: S1PR2; Sample Tissue: COLO205 Whole Cell lysates; Antibody Dilution: 1.0 ug/ml