

Product datasheet for **TA338189**

trfp (MED20) Rabbit Polyclonal Antibody

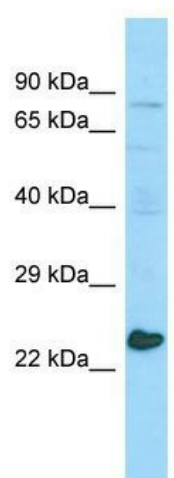
Product data:

Product Type:	Primary Antibodies
Applications:	WB
Recommended Dilution:	WB
Reactivity:	Human
Host:	Rabbit
Isotype:	IgG
Clonality:	Polyclonal
Immunogen:	The immunogen for anti-MED20 antibody is: synthetic peptide directed towards the middle region of Human MED20. Synthetic peptide located within the following region: PCLADTNFDVLMVKLGFFQSAKASKIETRGRYQYCDFLVKVGTVMG
Formulation:	Liquid. Purified antibody supplied in 1x PBS buffer with 0.09% (w/v) sodium azide and 2% sucrose. <i>Note that this product is shipped as lyophilized powder to China customers.</i>
Purification:	Affinity Purified
Conjugation:	Unconjugated
Storage:	Store at -20°C as received.
Stability:	Stable for 12 months from date of receipt.
Predicted Protein Size:	23 kDa
Gene Name:	mediator complex subunit 20
Database Link:	NP_004266 Entrez Gene 9477 Human Q9H944
Background:	MED20 is a subunit of the Mediator complex, a multiprotein coactivator of RNA transcription that interacts with DNA-bound transcriptional activators, RNA polymerase II, and general initiation factors.
Synonyms:	PRO0213; TRFP
Note:	Immunogen Sequence Homology: Dog: 100%; Pig: 100%; Rat: 100%; Goat: 100%; Horse: 100%; Human: 100%; Mouse: 100%; Bovine: 100%; Rabbit: 100%; Guinea pig: 100%



[View online »](#)

Product images:



WB Suggested Anti-MED20 Antibody; Titration:
1.0 ug/ml; Positive Control: RPMI-8226 Whole Cell