

## Product datasheet for **TA338188**

### CTNNA2 Rabbit Polyclonal Antibody

#### Product data:

|                         |  |
|-------------------------|--|
| Product Type:           | Primary Antibodies   |
| Applications:           | WB   |
| Recommended Dilution:   | WB   |
| Reactivity:             | Human  |
| Host:                   | Rabbit   |
| Isotype:                | IgG  |
| Clonality:              | Polyclonal   |
| Immunogen:              | The immunogen for anti-CTNNA2 antibody is: synthetic peptide directed towards the C-terminal region of Human CTNNA2. Synthetic peptide located within the following region: YQKVYGTAAVNSPVVSWKMKCAPEKKPLVKREKPEEFQTRVRRGSQKKHIS  |
| Formulation:            | Liquid. Purified antibody supplied in 1x PBS buffer with 0.09% (w/v) sodium azide and 2% sucrose.<br><i>Note that this product is shipped as lyophilized powder to China customers.</i>  |
| Purification:           | Affinity Purified  |
| Conjugation:            | Unconjugated   |
| Storage:                | Store at -20°C as received.  |
| Stability:              | Stable for 12 months from date of receipt.   |
| Predicted Protein Size: | 64 kDa   |
| Gene Name:              | catenin alpha 2  |
| Database Link:          | <a href="#">NP_004380</a><br><a href="#">Entrez Gene 1496 Human P26232</a>   |
| Background:             | CTNNA2 may function as a linker between cadherin adhesion receptors and the cytoskeleton to regulate cell-cell adhesion and differentiation in the nervous system. Regulates morphological plasticity of synapses and cerebellar and hippocampal lamination during development. It functions in the control of startle modulation. |
| Synonyms:               | CAP-R; CAPR; CT114; CTNR   |



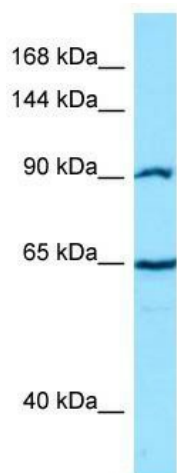
[View online »](#)

**Note:** Immunogen Sequence Homology: Dog: 100%; Pig: 100%; Human: 100%; Mouse: 100%; Guinea pig: 100%; Horse: 93%; Bovine: 93%; Rat: 91%; Rabbit: 91%; Zebrafish: 91%

**Protein Families:** Druggable Genome

**Protein Pathways:** Adherens junction, Arrhythmogenic right ventricular cardiomyopathy (ARVC), Endometrial cancer, Leukocyte transendothelial migration, Pathways in cancer, Tight junction

### Product images:



Host: Rabbit; Target Name: CTNNA2; Sample Tissue: PANC1 Whole cell lysates; Antibody Dilution: 1.0 ug/ml; CTNNA2 is supported by BioGPS gene expression data to be expressed in PANC1