

Product datasheet for **TA338187**

Estrogen Related Receptor alpha (ESRRA) Rabbit Polyclonal Antibody

Product data:

Product Type:	Primary Antibodies
Applications:	WB
Recommended Dilution:	WB
Reactivity:	Human
Host:	Rabbit
Isotype:	IgG
Clonality:	Polyclonal
Immunogen:	The immunogen for anti-ESRRA antibody: synthetic peptide directed towards the N terminal of human ESRRA. Synthetic peptide located within the following region: KEGVRLDRVRGGRQKYKRRPEVDLPFPGPFPAGPLAVAGGPRKTAAPVN
Formulation:	Liquid. Purified antibody supplied in 1x PBS buffer with 0.09% (w/v) sodium azide and 2% sucrose. <i>Note that this product is shipped as lyophilized powder to China customers.</i>
Purification:	Affinity Purified
Conjugation:	Unconjugated
Storage:	Store at -20°C as received.
Stability:	Stable for 12 months from date of receipt.
Predicted Protein Size:	46 kDa
Gene Name:	estrogen related receptor alpha
Database Link:	NP_004442 Entrez Gene 2101 Human P11474



[View online »](#)

Background:

The protein encoded by this gene is a nuclear receptor that is closely related to the estrogen receptor. This protein acts as a site-specific transcription regulator and has been also shown to interact with estrogen and the transcription factor TFIIIB by direct protein-protein contact. The binding and regulatory activities of this protein have been demonstrated in the regulation of a variety of genes including lactoferrin, osteopontin, medium-chain acyl coenzyme A dehydrogenase (MCAD) and thyroid hormone receptor genes. A processed pseudogene of ESRRA is located on chromosome 13q12.1. Alternatively spliced transcript variants have been found for this gene. [provided by RefSeq, Sep 2013]

Synonyms:

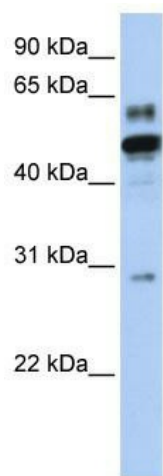
ERR1; ERRa; ERRalpha; ESRL1; NR3B1

Note:

Immunogen Sequence Homology: Pig: 100%; Rat: 100%; Horse: 100%; Human: 100%; Mouse: 100%; Yeast: 100%; Bovine: 100%; Guinea pig: 100%; Dog: 93%

Protein Families:

Druggable Genome, Nuclear Hormone Receptor, Transcription Factors

Product images:

WB Suggested Anti-ESRRA Antibody Titration: 0.2-1 ug/ml; ELISA Titer: 1: 1562500; Positive Control: Transfected 293T