

## Product datasheet for **TA338183**

### CDK2AP1 Rabbit Polyclonal Antibody

#### Product data:

Product Type:	Primary Antibodies
Applications:	WB
Recommended Dilution:	WB
Reactivity:	Human
Host:	Rabbit
Isotype:	IgG
Clonality:	Polyclonal
Immunogen:	The immunogen for anti-CDK2AP1 antibody is: synthetic peptide directed towards the C-terminal region of Human CDK2AP1. Synthetic peptide located within the following region: LLAIIIEELGKEIRPTYAGSKSAMERLKRGIHARGLVRECLAETERNARS
Formulation:	Liquid. Purified antibody supplied in 1x PBS buffer with 0.09% (w/v) sodium azide and 2% sucrose. <i>Note that this product is shipped as lyophilized powder to China customers.</i>
Purification:	Affinity Purified
Conjugation:	Unconjugated
Storage:	Store at -20°C as received.
Stability:	Stable for 12 months from date of receipt.
Predicted Protein Size:	12 kDa
Gene Name:	cyclin-dependent kinase 2 associated protein 1
Database Link:	<a href="#">NP_004633</a> <a href="#">Entrez Gene 8099 Human</a> <a href="#">O14519</a>
Background:	The protein encoded by this gene is a specific CDK2-associated protein, which is thought to negatively regulate CDK2 activity by sequestering monomeric CDK2, and targeting CDK2 for proteolysis. This protein was found to also interact with DNA polymerase alpha/primase and mediate the phosphorylation of the large p180 subunit, which suggested the regulatory role in DNA replication during S phase of the cell cycle. A similar gene in hamster was isolated from, and functions as a growth suppressor of normal keratinocytes.

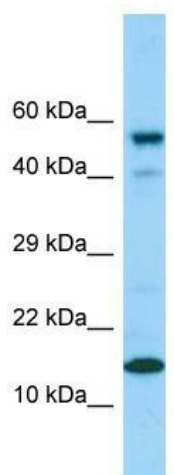


[View online »](#)

**Synonyms:** doc-1; DOC1; DORC1; p12DOC-1; ST19

**Note:** Immunogen Sequence Homology: Dog: 100%; Pig: 100%; Rat: 100%; Horse: 100%; Human: 100%; Mouse: 100%; Bovine: 100%; Rabbit: 100%; Guinea pig: 100%; Zebrafish: 92%

**Product images:**



WB Suggested Anti-CDK2AP1 Antibody; Titration: 1.0 ug/ml; Positive Control: HeLa Whole Cell