

Product datasheet for **TA338180**

ANGPTL1 Rabbit Polyclonal Antibody

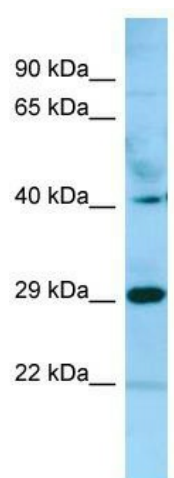
Product data:

| | |
|-------------------------|--|
| Product Type: | Primary Antibodies |
| Applications: | WB |
| Recommended Dilution: | WB |
| Reactivity: | Human |
| Host: | Rabbit |
| Isotype: | IgG |
| Clonality: | Polyclonal |
| Immunogen: | The immunogen for anti-ANGPTL1 antibody is: synthetic peptide directed towards the C-terminal region of Human ANGPTL1. Synthetic peptide located within the following region: PDLATSPTKSPFKIPPVTFINEGPFKDCQQAKEAGHSVNGIFWAEYRGGG |
| Formulation: | Liquid. Purified antibody supplied in 1x PBS buffer with 0.09% (w/v) sodium azide and 2% sucrose. <i>Note that this product is shipped as lyophilized powder to China customers.</i> |
| Purification: | Affinity Purified |
| Conjugation: | Unconjugated |
| Storage: | Store at -20°C as received. |
| Stability: | Stable for 12 months from date of receipt. |
| Predicted Protein Size: | 30 kDa |
| Gene Name: | angiopoietin like 1 |
| Database Link: | NP_004664 Entrez Gene 9068 Human O95841 |
| Background: | The function of this protein remains unknown. |
| Synonyms: | ANG3; ANGPT3; AngY; ARP1; dj595C2.2; UNQ162 |
| Note: | Immunogen Sequence Homology: Human: 100%; Mouse: 100%; Rabbit: 100%; Dog: 93%; Pig: 93%; Horse: 93%; Guinea pig: 86%; Bovine: 79%; Zebrafish: 79% |
| Protein Families: | Druggable Genome, Secreted Protein |



[View online »](#)

Product images:



Host: Rabbit; Target Name: ANGPTL1; Sample Tissue: Fetal Brain lysates; Antibody Dilution: 1.0 ug/ml