

Product datasheet for **TA338179**

VCY Rabbit Polyclonal Antibody

Product data:

Product Type:	Primary Antibodies
Applications:	WB
Recommended Dilution:	WB
Reactivity:	Human
Host:	Rabbit
Isotype:	IgG
Clonality:	Polyclonal
Immunogen:	The immunogen for anti-VCY antibody is: synthetic peptide directed towards the N-terminal region of Human VCY. Synthetic peptide located within the following region: RKSSSQSPSPGPKKTKVAEKGEAVRGRRGKKGAAATKMAAVTAPEAES
Formulation:	Liquid. Purified antibody supplied in 1x PBS buffer with 0.09% (w/v) sodium azide and 2% sucrose. <i>Note that this product is shipped as lyophilized powder to China customers.</i>
Purification:	Affinity Purified
Conjugation:	Unconjugated
Storage:	Store at -20°C as received.
Stability:	Stable for 12 months from date of receipt.
Predicted Protein Size:	13 kDa
Gene Name:	variable charge, Y-linked
Database Link:	NP_004670 Entrez Gene 9084 Human O14598



[View online »](#)

Background:

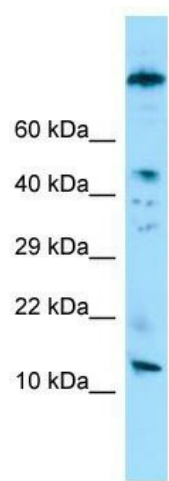
The protein encoded by this gene is a member of a family of human VCX/Y genes. This gene family has multiple members on both X and Y chromosomes, and all are expressed exclusively in male germ cells. Members of the VCX/Y family share a high degree of sequence identity, with the exception that a 30-bp unit is tandemly repeated in X-linked members but occurs only once in Y-linked members. VCX/Y genes encode small and highly charged proteins of unknown function. This gene encodes a small, positively charged protein. The presence of a putative bipartite nuclear localization signal suggests that this gene encodes a nuclear protein. The genome has two identical copies of this gene within a palindromic region; this record represents the more centromeric copy.

Synonyms:

BPY1; VCY1; VCY1A

Note:

Immunogen Sequence Homology: Horse: 100%; Human: 100%

Product images:

WB Suggested Anti-VCY Antibody; Titration: 1.0 ug/ml; Positive Control: Jurkat Whole Cell