

Product datasheet for **TA338177**

REPS2 Rabbit Polyclonal Antibody

Product data:

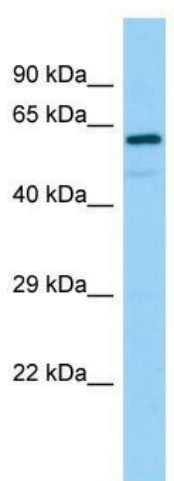
Product Type:	Primary Antibodies
Applications:	WB
Recommended Dilution:	WB
Reactivity:	Human
Host:	Rabbit
Isotype:	IgG
Clonality:	Polyclonal
Immunogen:	The immunogen for anti-REPS2 antibody is: synthetic peptide directed towards the C-terminal region of Human REPS2. Synthetic peptide located within the following region: KDVLYSQPPSKPIRRKFRPENQATENQEPSTAASGPASAATMKPHPTVQK
Formulation:	Liquid. Purified antibody supplied in 1x PBS buffer with 0.09% (w/v) sodium azide and 2% sucrose. <i>Note that this product is shipped as lyophilized powder to China customers.</i>
Purification:	Affinity Purified
Conjugation:	Unconjugated
Storage:	Store at -20°C as received.
Stability:	Stable for 12 months from date of receipt.
Predicted Protein Size:	57 kDa
Gene Name:	RALBP1 associated Eps domain containing 2
Database Link:	NP_004717 Entrez Gene 9185 Human Q8NFH8
Background:	The product of this gene is part of a protein complex that regulates the endocytosis of growth factor receptors. The encoded protein directly interacts with a GTPase activating protein that functions downstream of the small G protein Ral. Its expression can negatively affect receptor internalization and inhibit growth factor signaling. Multiple transcript variants encoding different isoforms have been found for this gene.
Synonyms:	POB1



[View online »](#)

Note: Immunogen Sequence Homology: Pig: 100%; Horse: 100%; Human: 100%; Bovine: 100%; Rabbit: 93%; Rat: 86%; Mouse: 83%; Dog: 80%; Guinea pig: 79%

Product images:



Host: Rabbit; Target Name: REPS2; Sample Tissue: 721_B Whole Cell lysates; Antibody Dilution: 1.0 ug/ml REPS2 is supported by BioGPS gene expression data to be expressed in 721_B