

Product datasheet for **TA338176**

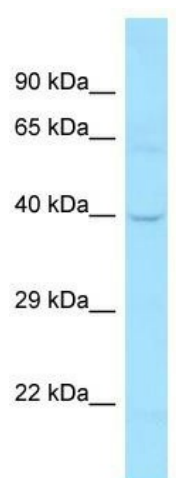
DCAMKL1 (DCLK1) Rabbit Polyclonal Antibody

Product data:

Product Type:	Primary Antibodies
Applications:	WB
Recommended Dilution:	WB
Reactivity:	Human
Host:	Rabbit
Isotype:	IgG
Clonality:	Polyclonal
Immunogen:	The immunogen for anti-DCLK1 antibody is: synthetic peptide directed towards the C-terminal region of Human DCLK1. Synthetic peptide located within the following region: IFIACGPEKFRYQDDFLLDESECRVVKSTS YTKIASSRRSTTKSPGPSR
Formulation:	Liquid. Purified antibody supplied in 1x PBS buffer with 0.09% (w/v) sodium azide and 2% sucrose. <i>Note that this product is shipped as lyophilized powder to China customers.</i>
Purification:	Affinity Purified
Conjugation:	Unconjugated
Storage:	Store at -20°C as received.
Stability:	Stable for 12 months from date of receipt.
Predicted Protein Size:	39 kDa
Gene Name:	doublecortin like kinase 1
Database Link:	NP_004725 Entrez Gene 9201 Human O15075
Background:	The function of this protein remains unknown.
Synonyms:	CL1; CLICK1; DCAMKL1; DCDC3A; DCLK
Note:	Immunogen Sequence Homology: Pig: 100%; Rat: 100%; Horse: 100%; Human: 100%; Bovine: 100%; Rabbit: 100%; Guinea pig: 100%; Dog: 93%; Mouse: 92%
Protein Families:	Druggable Genome, Protein Kinase



[View online »](#)

Product images:

Host: Rabbit; Target Name: DCLK1; Sample
Tissue: 721_B Whole Cell lysates; Antibody
Dilution: 1.0 ug/ml