

Product datasheet for TA338175

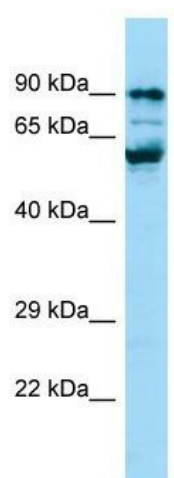
PPIG Rabbit Polyclonal Antibody

Product data:

Product Type:	Primary Antibodies
Applications:	WB
Recommended Dilution:	WB
Reactivity:	Human
Host:	Rabbit
Isotype:	IgG
Clonality:	Polyclonal
Immunogen:	The immunogen for anti-PPIG antibody is: synthetic peptide directed towards the C-terminal region of Human PPIG. Synthetic peptide located within the following region: DSRSSEREESQSRNKDKYRNQESKSSHRKENSESEKRMYSKSRDHNSSNN
Formulation:	Liquid. Purified antibody supplied in 1x PBS buffer with 0.09% (w/v) sodium azide and 2% sucrose. <i>Note that this product is shipped as lyophilized powder to China customers.</i>
Purification:	Affinity Purified
Conjugation:	Unconjugated
Storage:	Store at -20°C as received.
Stability:	Stable for 12 months from date of receipt.
Predicted Protein Size:	88 kDa
Gene Name:	peptidylprolyl isomerase G
Database Link:	NP_004783 Entrez Gene 9360 Human Q13427
Background:	PPIases accelerate the folding of proteins. It catalyzes the cis-trans isomerization of proline imidic peptide bonds in oligopeptides. PPIG may be implicated in the folding, transport, and assembly of proteins. PPIG may play an important role in the regulation of pre-mRNA splicing.
Synonyms:	CARS-Cyp; CYP; SCAF10; SRCyp
Note:	Immunogen Sequence Homology: Pig: 100%; Horse: 100%; Human: 100%; Rabbit: 100%; Guinea pig: 100%; Dog: 93%; Rat: 93%; Mouse: 93%; Bovine: 92%



[View online »](#)

Product images:

WB Suggested Anti-PPIG Antibody; Titration: 1.0 ug/ml; Positive Control: Jurkat Whole Cell PPIG is strongly supported by BioGPS gene expression data to be expressed in Human Jurkat cells