

## Product datasheet for TA338174

### NCR1 Rabbit Polyclonal Antibody

#### Product data:

Product Type:	Primary Antibodies
Applications:	WB
Recommended Dilution:	WB
Reactivity:	Mouse
Host:	Rabbit
Isotype:	IgG
Clonality:	Polyclonal
Immunogen:	The immunogen for anti-Gps2 antibody is: synthetic peptide directed towards the N-terminal region of Mouse Gps2. Synthetic peptide located within the following region: LKKVLHEEEKRRRKEQSDLTTLTSAAYQQLTVHTGTHLLNMQSPGGHN
Formulation:	Liquid. Purified antibody supplied in 1x PBS buffer with 0.09% (w/v) sodium azide and 2% sucrose. <i>Note that this product is shipped as lyophilized powder to China customers.</i>
Purification:	Affinity Purified
Conjugation:	Unconjugated
Storage:	Store at -20°C as received.
Stability:	Stable for 12 months from date of receipt.
Predicted Protein Size:	37 kDa
Gene Name:	natural cytotoxicity triggering receptor 1
Database Link:	<a href="#">NP_004820</a> <a href="#">Entrez Gene 9437 Human</a> <a href="#">O76036</a>
Background:	The function of this protein remains unknown.
Synonyms:	CD335; LY94; NK-p46; NKP46
Note:	Immunogen Sequence Homology: Dog: 100%; Pig: 100%; Rat: 100%; Horse: 100%; Human: 100%; Mouse: 100%; Bovine: 100%; Rabbit: 100%; Guinea pig: 100%; Zebrafish: 93%; Yeast: 91%

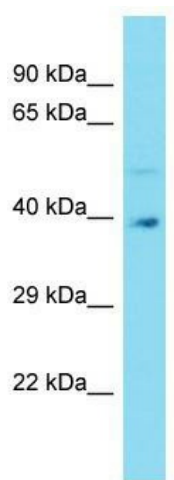


[View online »](#)

Protein Families: Druggable Genome, Transmembrane

Protein Pathways: Natural killer cell mediated cytotoxicity

### Product images:



Host: Rabbit; Target Name: Gps2; Sample Tissue: Mouse Liver lysates; Antibody Dilution: 1.0 ug/ml