

## Product datasheet for **TA338173**

### DRIP130 (MED23) Rabbit Polyclonal Antibody

#### Product data:

Product Type:	Primary Antibodies
Applications:	WB
Recommended Dilution:	WB
Reactivity:	Human
Host:	Rabbit
Isotype:	IgG
Clonality:	Polyclonal
Immunogen:	The immunogen for anti-MED23 antibody: synthetic peptide directed towards the N terminal of human MED23. Synthetic peptide located within the following region: METQLQSIFEEVVKTEVIEEAFPGMFMDTPEDEKTKLISCLGAFRQFWGG
Formulation:	Liquid. Purified antibody supplied in 1x PBS buffer with 0.09% (w/v) sodium azide and 2% sucrose. <i>Note that this product is shipped as lyophilized powder to China customers.</i>
Purification:	Affinity Purified
Conjugation:	Unconjugated
Storage:	Store at -20°C as received.
Stability:	Stable for 12 months from date of receipt.
Predicted Protein Size:	156 kDa
Gene Name:	mediator complex subunit 23
Database Link:	<a href="#">NP_004821</a> <a href="#">Entrez Gene 9439 Human</a> <a href="#">Q9ULK4</a>



[View online »](#)

**Background:**

The activation of gene transcription is a multistep process that is triggered by factors that recognize transcriptional enhancer sites in DNA. These factors work with co-activators to direct transcriptional initiation by the RNA polymerase II apparatus. The protein encoded by this gene is a subunit of the CRSP (cofactor required for SP1 activation) complex, which, along with TFIID, is required for efficient activation by SP1. This protein is also a component of other multisubunit complexes e.g. thyroid hormone receptor-(TR-) associated proteins which interact with TR and facilitate TR function on DNA templates in conjunction with initiation factors and cofactors. This protein also acts as a metastasis suppressor. Several alternatively spliced transcript variants encoding different isoforms have been described for this gene. [provided by RefSeq, Jul 2012]

**Synonyms:**

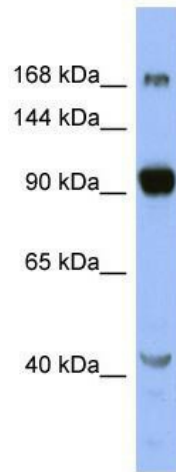
ARC130; CRSP3; CRSP130; CRSP133; DRIP130; MRT18; SUR-2; SUR2

**Note:**

Immunogen Sequence Homology: Pig: 100%; Rat: 100%; Horse: 100%; Human: 100%; Mouse: 100%; Yeast: 100%; Bovine: 100%; Rabbit: 100%; Guinea pig: 100%; Dog: 93%; Zebrafish: 93%

**Protein Families:**

Druggable Genome, Transcription Factors

**Product images:**

WB Suggested Anti-MED23 Antibody Titration:  
0.2-1 ug/ml; ELISA Titer: 1:312500; Positive  
Control: OVCAR-3 cell lysate