

Product datasheet for **TA338172**

Epiphycan (EPYC) Rabbit Polyclonal Antibody

Product data:

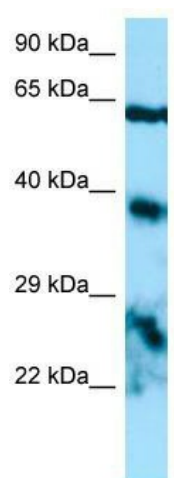
Product Type:	Primary Antibodies
Applications:	WB
Recommended Dilution:	WB
Reactivity:	Human
Host:	Rabbit
Isotype:	IgG
Clonality:	Polyclonal
Immunogen:	The immunogen for anti-EPYC antibody is: synthetic peptide directed towards the middle region of Human EPYC. Synthetic peptide located within the following region: FYSRFNRIKKINKNDFASLSDLKRIDLTSNLISEIDEDAFRKLPLRELV
Formulation:	Liquid. Purified antibody supplied in 1x PBS buffer with 0.09% (w/v) sodium azide and 2% sucrose. <i>Note that this product is shipped as lyophilized powder to China customers.</i>
Purification:	Affinity Purified
Conjugation:	Unconjugated
Storage:	Store at -20°C as received.
Stability:	Stable for 12 months from date of receipt.
Predicted Protein Size:	35 kDa
Gene Name:	epiphycan
Database Link:	NP_004941 Entrez Gene 1833 Human Q99645
Background:	Dermatan sulfate proteoglycan 3 is a member of the small leucine-rich repeat proteoglycan family. This gene is composed of seven exons. It regulates fibrillogenesis by interacting with collagen fibrils and other extracellular matrix proteins.
Synonyms:	DSPG3; Pg-Lb; PGLB; SLRR3B
Note:	Immunogen Sequence Homology: Dog: 100%; Rat: 100%; Human: 100%; Mouse: 100%; Bovine: 100%; Rabbit: 100%; Pig: 93%; Horse: 93%; Guinea pig: 93%



[View online »](#)

Protein Families: Secreted Protein

Product images:



WB Suggested Anti-EPYC Antibody; Titration: 1.0 ug/ml; Positive Control: HepG2 Whole Cell