

Product datasheet for **TA338168**

Parathyroid Hormone Receptor 2 (PTH2R) Rabbit Polyclonal Antibody

Product data:

Product Type:	Primary Antibodies
Applications:	WB
Recommended Dilution:	WB
Reactivity:	Human
Host:	Rabbit
Isotype:	IgG
Clonality:	Polyclonal
Immunogen:	The immunogen for anti-PTH2R antibody is: synthetic peptide directed towards the C-terminal region of Human PTH2R. Synthetic peptide located within the following region: NSEQDCLPHSFHEETKEDSGRQGDDILMEKPSRPMESNPDTGECQGETED
Formulation:	Liquid. Purified antibody supplied in 1x PBS buffer with 0.09% (w/v) sodium azide and 2% sucrose. <i>Note that this product is shipped as lyophilized powder to China customers.</i>
Purification:	Affinity Purified
Conjugation:	Unconjugated
Storage:	Store at -20°C as received.
Stability:	Stable for 12 months from date of receipt.
Predicted Protein Size:	60 kDa
Gene Name:	parathyroid hormone 2 receptor
Database Link:	NP_005039 Entrez Gene 5746 Human P49190
Background:	The protein encoded by this gene is a member of the G-protein coupled receptor family 2. This protein is a receptor for parathyroid hormone (PTH). This receptor is more selective in ligand recognition and has a more specific tissue distribution compared to parathyroid hormone receptor 1 (PTH1R). It is activated only by PTH and not by parathyroid hormone-like hormone (PTH-like) and is particularly abundant in brain and pancreas.
Synonyms:	PTH2R



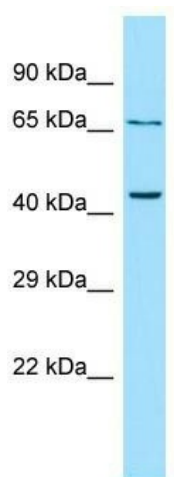
[View online »](#)

Note: Immunogen Sequence Homology: Human: 100%; Pig: 86%; Guinea pig: 86%; Bovine: 79%

Protein Families: Druggable Genome, GPCR, Transmembrane

Protein Pathways: Neuroactive ligand-receptor interaction

Product images:



WB Suggested Anti-PTH2R Antibody; Titration: 1.0 ug/ml; Positive Control: OVCAR-3 Whole Cell
PTH2R is supported by BioGPS gene expression data to be expressed in OVCAR3