

Product datasheet for **TA338167**

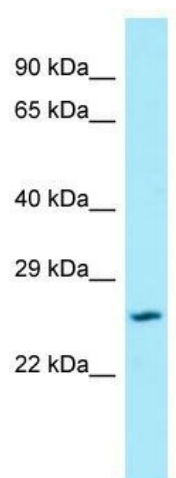
SLC17A1 Rabbit Polyclonal Antibody

Product data:

Product Type:	Primary Antibodies
Applications:	WB
Recommended Dilution:	WB
Reactivity:	Human
Host:	Rabbit
Isotype:	IgG
Clonality:	Polyclonal
Immunogen:	The immunogen for anti-SLC17A1 antibody is: synthetic peptide directed towards the N-terminal region of Human SLC17A1. Synthetic peptide located within the following region: VHCCNVIIITAQRACLNLTMVVMVNSTDPHGLPNTSTKKLLDNIKNPMYNW
Formulation:	Liquid. Purified antibody supplied in 1x PBS buffer with 0.09% (w/v) sodium azide and 2% sucrose. <i>Note that this product is shipped as lyophilized powder to China customers.</i>
Purification:	Affinity Purified
Conjugation:	Unconjugated
Storage:	Store at -20°C as received.
Stability:	Stable for 12 months from date of receipt.
Predicted Protein Size:	22 kDa
Gene Name:	solute carrier family 17 member 1
Database Link:	NP_005065 Entrez Gene 6568 Human Q14916
Background:	The function of this protein remains unknown.
Synonyms:	NAPI-1; NPT-1; NPT1
Note:	Immunogen Sequence Homology: Horse: 100%; Human: 100%; Bovine: 85%; Dog: 83%; Pig: 77%
Protein Families:	Transmembrane



[View online »](#)

Product images:

Host: Rabbit; Target Name: SLC17A1; Sample
Tissue: ACHN Whole Cell lysates; Antibody
Dilution: 1.0 ug/ml