

## Product datasheet for **TA338166**

### Constitutive androstane receptor (NR1I3) Rabbit Polyclonal Antibody

#### Product data:

Product Type:	Primary Antibodies
Applications:	IHC, WB
Recommended Dilution:	WB, IHC
Reactivity:	Human
Host:	Rabbit
Isotype:	IgG
Clonality:	Polyclonal
Immunogen:	The immunogen for anti-NR1I3 antibody: synthetic peptide directed towards the N terminal of human NR1I3. Synthetic peptide located within the following region: MASREDELRCNVCGDQATGYHFNALTCGCKGFFRRTVSKSIGPTCPFA
Formulation:	Liquid. Purified antibody supplied in 1x PBS buffer with 0.09% (w/v) sodium azide and 2% sucrose. <i>Note that this product is shipped as lyophilized powder to China customers.</i>
Purification:	Protein A purified
Conjugation:	Unconjugated
Storage:	Store at -20°C as received.
Stability:	Stable for 12 months from date of receipt.
Predicted Protein Size:	39 kDa
Gene Name:	nuclear receptor subfamily 1 group I member 3
Database Link:	<a href="#">NP_005113</a> <a href="#">Entrez Gene 9970 Human</a> <a href="#">Q14994</a>



[View online »](#)

**Background:**

This gene encodes a member of the nuclear receptor superfamily, and is a key regulator of xenobiotic and endobiotic metabolism. The protein binds to DNA as a monomer or a heterodimer with the retinoid X receptor and regulates the transcription of target genes involved in drug metabolism and bilirubin clearance, such as cytochrome P450 family members. Unlike most nuclear receptors, this transcriptional regulator is constitutively active in the absence of ligand but is regulated by both agonists and inverse agonists. Ligand binding results in translocation of this protein to the nucleus, where it activates or represses target gene transcription. These ligands include bilirubin, a variety of foreign compounds, steroid hormones, and prescription drugs. Multiple transcript variants encoding different isoforms have been found for this gene. [provided by RefSeq, Jul 2008]

**Synonyms:**

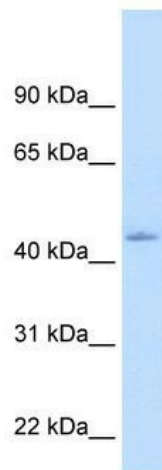
CAR; CAR1; MB67

**Note:**

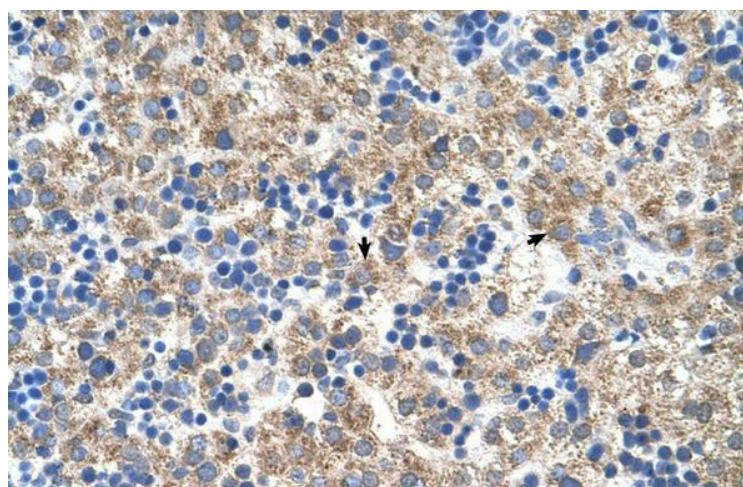
Immunogen Sequence Homology: Pig: 100%; Human: 100%; Dog: 92%; Rat: 92%; Mouse: 92%; Bovine: 90%; Guinea pig: 79%

**Protein Families:**

Druggable Genome, Nuclear Hormone Receptor, Transcription Factors

**Product images:**

WB Suggested Anti-NR1I3 Antibody Titration: 1.25 ug/ml; Positive Control: Human Liver



Human Liver