

Product datasheet for **TA338164**

NR2F6 Rabbit Polyclonal Antibody

Product data:

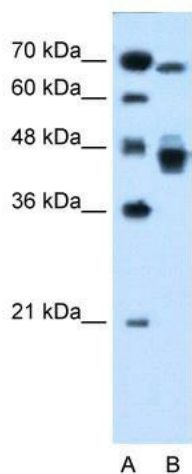
Product Type:	Primary Antibodies
Applications:	IHC, WB
Recommended Dilution:	WB, IHC
Reactivity:	Human
Host:	Rabbit
Isotype:	IgG
Clonality:	Polyclonal
Immunogen:	The immunogen for anti-NR2F6 antibody: synthetic peptide directed towards the N terminal of human NR2F6. Synthetic peptide located within the following region: AGGYPRAAEDDSASPPGAASDAEPGDEERPGLQVDCVCGDKSSGKHYGV
Formulation:	Liquid. Purified antibody supplied in 1x PBS buffer with 0.09% (w/v) sodium azide and 2% sucrose. <i>Note that this product is shipped as lyophilized powder to China customers.</i>
Purification:	Affinity Purified
Conjugation:	Unconjugated
Storage:	Store at -20°C as received.
Stability:	Stable for 12 months from date of receipt.
Predicted Protein Size:	43 kDa
Gene Name:	nuclear receptor subfamily 2 group F member 6
Database Link:	NP_005225 Entrez Gene 2063 Human P10588
Background:	Orphan nuclear receptor EAR-2 (NR2F6, V-erbA related protein EAR-2) is predicted to be a protein similar in primary structure to receptors for steroid hormones or thyroid hormone (T3).
Synonyms:	EAR-2; EAR2; ERBAL2
Note:	Immunogen Sequence Homology: Dog: 100%; Pig: 100%; Rat: 100%; Human: 100%; Mouse: 100%; Bovine: 100%; Guinea pig: 93%



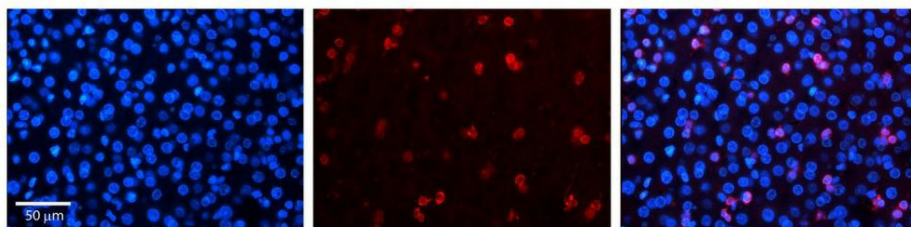
[View online »](#)

Protein Families: Druggable Genome, Nuclear Hormone Receptor, Transcription Factors

Product images:



WB Suggested Anti-NR2F6 Antibody Titration: 0.2-1 ug/ml; Positive Control: HepG2 cell lysate. NR2F6 is strongly supported by BioGPS gene expression data to be expressed in Human HepG2 cells



Human liver