

Product datasheet for **TA338161**

GPR6 Rabbit Polyclonal Antibody

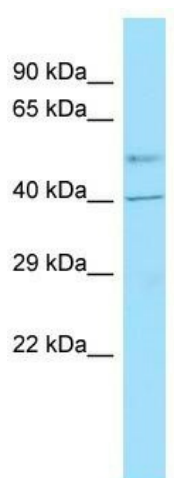
Product data:

Product Type:	Primary Antibodies
Applications:	WB
Recommended Dilution:	WB
Reactivity:	Human
Host:	Rabbit
Isotype:	IgG
Clonality:	Polyclonal
Immunogen:	The immunogen for anti-GPR6 antibody is: synthetic peptide directed towards the C-terminal region of Human GPR6. Synthetic peptide located within the following region: ATLLPATYNSMINPIIYAFRNQEIQRALWLLLCGCFQSKVPFRSRSPSEV
Formulation:	Liquid. Purified antibody supplied in 1x PBS buffer with 0.09% (w/v) sodium azide and 2% sucrose.
Purification:	Affinity Purified
Conjugation:	Unconjugated
Storage:	Store at -20°C as received.
Stability:	Stable for 12 months from date of receipt.
Predicted Protein Size:	41 kDa
Gene Name:	G protein-coupled receptor 6
Database Link:	NP_005275 Entrez Gene 2830 Human P46095
Background:	The function of this protein remains unknown.
Synonyms:	G protein-coupled receptor 6
Note:	Immunogen Sequence Homology: Dog: 100%; Pig: 100%; Rat: 100%; Human: 100%; Mouse: 100%; Rabbit: 100%; Horse: 93%; Guinea pig: 93%; Bovine: 86%
Protein Families:	Druggable Genome, GPCR, Transmembrane



[View online »](#)

Product images:



Host: Rabbit; Target Name: GPR6; Sample Tissue: Fetal Kidney lysates; Antibody Dilution: 1.0 ug/ml