

Product datasheet for **TA338160**

GPR7 (NPBWR1) Rabbit Polyclonal Antibody

Product data:

Product Type:	Primary Antibodies
Applications:	WB
Recommended Dilution:	WB
Reactivity:	Human
Host:	Rabbit
Isotype:	IgG
Clonality:	Polyclonal
Immunogen:	The immunogen for anti-NPBWR1 antibody is: synthetic peptide directed towards the N-terminal region of Human NPBWR1. Synthetic peptide located within the following region: FSEPWPANASGPDPALSCSNASTLAPLPAPLAVAVPVVYAVICAVGLAGN
Formulation:	Liquid. Purified antibody supplied in 1x PBS buffer with 0.09% (w/v) sodium azide and 2% sucrose.
Purification:	Affinity Purified
Conjugation:	Unconjugated
Storage:	Store at -20°C as received.
Stability:	Stable for 12 months from date of receipt.
Predicted Protein Size:	36 kDa
Gene Name:	neuropeptides B/W receptor 1
Database Link:	NP_005276 Entrez Gene 2831 Human P48145
Background:	NPBWR1 interacts specifically with a number of opioid ligands. NPBWR1 is a receptor for neuropeptides B and W, which may be involved in neuroendocrine system regulation, food intake and the organization of other signals. NPBWR1 has a higher affinity for neuropeptide B.
Synonyms:	GPR7
Note:	Immunogen Sequence Homology: Human: 100%

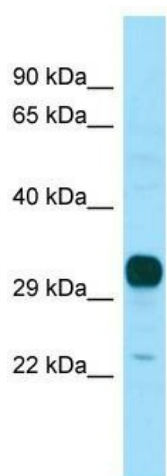


[View online »](#)

Protein Families: Druggable Genome, GPCR, Transmembrane

Protein Pathways: Neuroactive ligand-receptor interaction

Product images:



WB Suggested Anti-NPBWR1 Antibody; Titration:
1.0 ug/ml; Positive Control: Fetal Brain