

Product datasheet for **TA338159**

NPBWR2 Rabbit Polyclonal Antibody

Product data:

Product Type:	Primary Antibodies
Applications:	WB
Recommended Dilution:	WB
Reactivity:	Human
Host:	Rabbit
Isotype:	IgG
Clonality:	Polyclonal
Immunogen:	The immunogen for anti-NPBWR2 antibody is: synthetic peptide directed towards the N-terminal region of Human NPBWR2. Synthetic peptide located within the following region: LPTMGANVSQDNGTGHNATFSEPLPFLYVLLPAVYSGICAVGLTGNTAVI
Formulation:	Liquid. Purified antibody supplied in 1x PBS buffer with 0.09% (w/v) sodium azide and 2% sucrose. <i>Note that this product is shipped as lyophilized powder to China customers.</i>
Purification:	Affinity Purified
Conjugation:	Unconjugated
Storage:	Store at -20°C as received.
Stability:	Stable for 12 months from date of receipt.
Predicted Protein Size:	37 kDa
Gene Name:	neuropeptides B/W receptor 2
Database Link:	NP_005277 Entrez Gene 2832 Human P48146
Background:	The protein encoded by this gene is an integral membrane protein and G protein-coupled receptor. The encoded protein is similar in sequence to another G protein-coupled receptor (GPR7), and it is structurally similar to opioid and somatostatin receptors. This protein binds neuropeptides B and W. This gene is intronless and is expressed primarily in the frontal cortex of the brain.
Synonyms:	GPR8



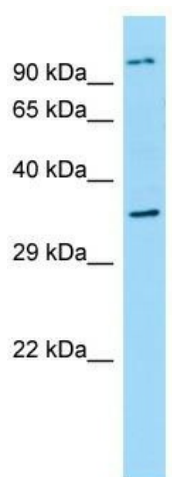
[View online »](#)

Note: Immunogen Sequence Homology: Human: 100%

Protein Families: Druggable Genome, GPCR, Transmembrane

Protein Pathways: Neuroactive ligand-receptor interaction

Product images:



WB Suggested Anti-NPBWR2 Antibody; Titration:
1.0 ug/ml; Positive Control: Placenta