

Product datasheet for **TA338158**

GPR12 Rabbit Polyclonal Antibody

Product data:

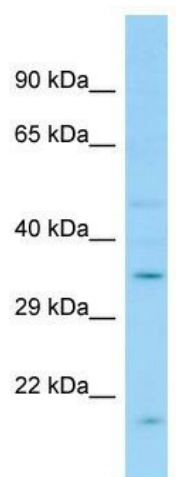
Product Type:	Primary Antibodies
Applications:	WB
Recommended Dilution:	WB
Reactivity:	Human
Host:	Rabbit
Isotype:	IgG
Clonality:	Polyclonal
Immunogen:	The immunogen for anti-GPR12 antibody is: synthetic peptide directed towards the C-terminal region of Human GPR12. Synthetic peptide located within the following region: SICLGLLPVMGWNCLRDESTCSVRPLTKNNAAILSVSFLFMFALMLQLY
Formulation:	Liquid. Purified antibody supplied in 1x PBS buffer with 0.09% (w/v) sodium azide and 2% sucrose. <i>Note that this product is shipped as lyophilized powder to China customers.</i>
Purification:	Affinity Purified
Conjugation:	Unconjugated
Storage:	Store at -20°C as received.
Stability:	Stable for 12 months from date of receipt.
Predicted Protein Size:	37 kDa
Gene Name:	G protein-coupled receptor 12
Database Link:	NP_005279 Entrez Gene 2835 Human P47775
Background:	GPR12 promotes neurite outgrowth and blocks myelin inhibition in neurons. GPR12 is a receptor with constitutive G(s) signaling activity that stimulates cyclic AMP production.
Synonyms:	GPCR12; GPCR21; PPP1R84
Note:	Immunogen Sequence Homology: Dog: 100%; Pig: 100%; Rat: 100%; Horse: 100%; Human: 100%; Mouse: 100%; Bovine: 100%; Rabbit: 100%



[View online »](#)

Protein Families: Druggable Genome, GPCR, Transmembrane

Product images:



WB Suggested Anti-GPR12 Antibody; Titration: 1.0 ug/ml; Positive Control: Fetal Liver