

## Product datasheet for **TA338157**

### GPR22 Rabbit Polyclonal Antibody

#### Product data:

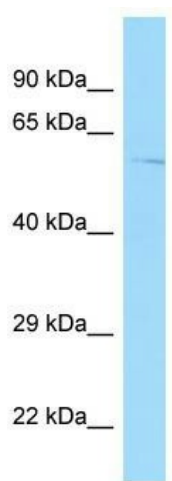
Product Type:	Primary Antibodies
Applications:	WB
Recommended Dilution:	WB
Reactivity:	Human
Host:	Rabbit
Isotype:	IgG
Clonality:	Polyclonal
Immunogen:	The immunogen for anti-GPR22 antibody is: synthetic peptide directed towards the C-terminal region of Human GPR22. Synthetic peptide located within the following region: KVLKSKMKKRVSIVEADPLPNNAVIHNSWIDPKRNKKITFEDSEIREKC
Formulation:	Liquid. Purified antibody supplied in 1x PBS buffer with 0.09% (w/v) sodium azide and 2% sucrose. <i>Note that this product is shipped as lyophilized powder to China customers.</i>
Purification:	Affinity Purified
Conjugation:	Unconjugated
Storage:	Store at -20°C as received.
Stability:	Stable for 12 months from date of receipt.
Predicted Protein Size:	49 kDa
Gene Name:	G protein-coupled receptor 22
Database Link:	<a href="#">NP_005286</a> <a href="#">Entrez Gene 2845 Human</a> <a href="#">Q99680</a>
Background:	This gene is a member of the G-protein coupled receptor 1 family and encodes a multi-pass membrane protein.
Synonyms:	MGC129847
Note:	Immunogen Sequence Homology: Dog: 100%; Human: 100%; Pig: 93%; Horse: 93%; Bovine: 93%; Rabbit: 93%; Rat: 86%; Mouse: 86%



[View online »](#)

Protein Families: Druggable Genome, GPCR, Transmembrane

### Product images:



WB Suggested Anti-GPR22 Antibody; Titration: 1.0 ug/ml; Positive Control: Fetal Kidney