

Product datasheet for **TA338155**

GPR34 Rabbit Polyclonal Antibody

Product data:

Product Type:	Primary Antibodies
Applications:	WB
Recommended Dilution:	WB
Reactivity:	Human
Host:	Rabbit
Isotype:	IgG
Clonality:	Polyclonal
Immunogen:	The immunogen for anti-GPR34 antibody is: synthetic peptide directed towards the C-terminal region of Human GPR34. Synthetic peptide located within the following region: SFNSCLDPVMYFLMSSNIRKIMCQLLFRRFQGEPSRSESTSEFKPGYSLH
Formulation:	Liquid. Purified antibody supplied in 1x PBS buffer with 0.09% (w/v) sodium azide and 2% sucrose. <i>Note that this product is shipped as lyophilized powder to China customers.</i>
Purification:	Affinity Purified
Conjugation:	Unconjugated
Storage:	Store at -20°C as received.
Stability:	Stable for 12 months from date of receipt.
Predicted Protein Size:	44 kDa
Gene Name:	G protein-coupled receptor 34
Database Link:	NP_005291 Entrez Gene 2857 Human Q9UPC5
Background:	G protein-coupled receptors (GPCRs), such as GPR34, are integral membrane proteins containing 7 putative transmembrane domains (TMs). These proteins mediate signals to the interior of the cell via activation of heterotrimeric G proteins that in turn activate various effector proteins, ultimately resulting in a physiologic response.
Synonyms:	LYPSR1

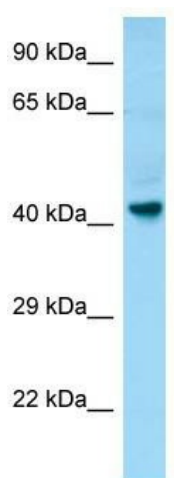


[View online »](#)

Note: Immunogen Sequence Homology: Human: 100%; Dog: 93%; Pig: 93%; Horse: 93%; Bovine: 93%; Rabbit: 93%; Guinea pig: 93%; Mouse: 86%; Rat: 79%

Protein Families: Druggable Genome, GPCR, Transmembrane

Product images:



WB Suggested Anti-GPR34 Antibody; Titration: 1.0 ug/ml; Positive Control: Fetal Brain