

## Product datasheet for **TA338154**

### GPR34 Rabbit Polyclonal Antibody

#### Product data:

Product Type:	Primary Antibodies
Applications:	WB
Recommended Dilution:	WB
Reactivity:	Human
Host:	Rabbit
Isotype:	IgG
Clonality:	Polyclonal
Immunogen:	The immunogen for anti-GPR34 antibody is: synthetic peptide directed towards the C-terminal region of Human GPR34. Synthetic peptide located within the following region: KGGHNSTMCFHYRDKHNAKGEAIFNFILVVMFWLIFLLIILSYIKIGKNL
Formulation:	Liquid. Purified antibody supplied in 1x PBS buffer with 0.09% (w/v) sodium azide and 2% sucrose. <i>Note that this product is shipped as lyophilized powder to China customers.</i>
Purification:	Affinity Purified
Conjugation:	Unconjugated
Storage:	Store at -20°C as received.
Stability:	Stable for 12 months from date of receipt.
Predicted Protein Size:	44 kDa
Gene Name:	G protein-coupled receptor 34
Database Link:	<a href="#">NP_005291</a> <a href="#">Entrez Gene 2857 Human</a> <a href="#">Q9UPC5</a>
Background:	G protein-coupled receptors (GPCRs), such as GPR34, are integral membrane proteins containing 7 putative transmembrane domains (TMs). These proteins mediate signals to the interior of the cell via activation of heterotrimeric G proteins that in turn activate various effector proteins, ultimately resulting in a physiologic response.
Synonyms:	LYPSR1

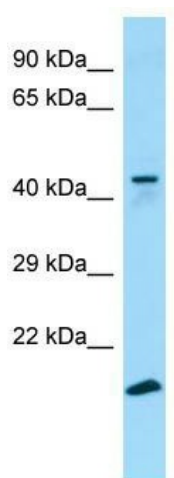


[View online »](#)

**Note:** Immunogen Sequence Homology: Pig: 100%; Rat: 100%; Horse: 100%; Human: 100%; Guinea pig: 100%; Mouse: 93%; Sheep: 93%; Bovine: 93%; Dog: 86%; Rabbit: 86%

**Protein Families:** Druggable Genome, GPCR, Transmembrane

**Product images:**



WB Suggested Anti-GPR34 Antibody; Titration: 1.0 ug/ml; Positive Control: 293T Whole Cell