

Product datasheet for **TA338153**

GPR37 Rabbit Polyclonal Antibody

Product data:

Product Type:	Primary Antibodies
Applications:	WB
Recommended Dilution:	WB
Reactivity:	Human
Host:	Rabbit
Isotype:	IgG
Clonality:	Polyclonal
Immunogen:	The immunogen for anti-GPR37 antibody is: synthetic peptide directed towards the C-terminal region of Human GPR37. Synthetic peptide located within the following region: KIRKAEKACTRGNKRQIQLESQMNCTVVALTYLGFICIIPENICNIVTAY
Formulation:	Liquid. Purified antibody supplied in 1x PBS buffer with 0.09% (w/v) sodium azide and 2% sucrose. <i>Note that this product is shipped as lyophilized powder to China customers.</i>
Purification:	Affinity Purified
Conjugation:	Unconjugated
Storage:	Store at -20°C as received.
Stability:	Stable for 12 months from date of receipt.
Predicted Protein Size:	64 kDa
Gene Name:	G protein-coupled receptor 37
Database Link:	NP_005293 Entrez Gene 2861 Human O15354
Background:	GPR37 is an orphan receptor and may have a unique functional role in the central nervous system.
Synonyms:	EDNRBL; hET(B)R-LP; PAELR
Note:	Immunogen Sequence Homology: Dog: 100%; Rat: 100%; Horse: 100%; Human: 100%; Bovine: 100%; Rabbit: 100%; Pig: 93%; Guinea pig: 93%; Mouse: 86%

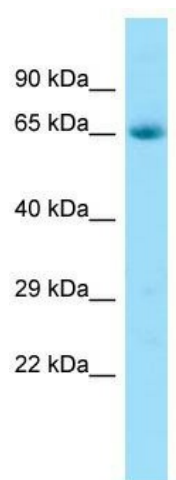


[View online »](#)

Protein Families: Druggable Genome, GPCR, Transmembrane

Protein Pathways: Parkinson's disease

Product images:



WB Suggested Anti-GPR37 Antibody; Titration: 1.0 ug/ml; Positive Control: Fetal Heart