

## Product datasheet for **TA338152**

### Alanine Transaminase (GPT) Rabbit Polyclonal Antibody

#### Product data:

Product Type:	Primary Antibodies
Applications:	IHC, WB
Recommended Dilution:	WB, IHC
Reactivity:	Human
Host:	Rabbit
Isotype:	IgG
Clonality:	Polyclonal
Immunogen:	The immunogen for anti-GPT antibody: synthetic peptide directed towards the N terminal of human GPT. Synthetic peptide located within the following region: CGGHSLGAYSVSSGIQLIREDVARYIERRDGGIPADPNNVFLSTGASDAI
Formulation:	Liquid. Purified antibody supplied in 1x PBS buffer with 0.09% (w/v) sodium azide and 2% sucrose. <i>Note that this product is shipped as lyophilized powder to China customers.</i>
Purification:	Protein A purified
Conjugation:	Unconjugated
Storage:	Store at -20°C as received.
Stability:	Stable for 12 months from date of receipt.
Predicted Protein Size:	55 kDa
Gene Name:	glutamic-pyruvate transaminase (alanine aminotransferase)
Database Link:	<a href="#">NP_005300</a> <a href="#">Entrez Gene 2875 Human</a> <a href="#">P24298</a>



[View online »](#)

**Background:** This gene encodes cytosolic alanine aminotransferase 1 (ALT1); also known as glutamate-pyruvate transaminase 1. This enzyme catalyzes the reversible transamination between alanine and 2-oxoglutarate to generate pyruvate and glutamate and, therefore, plays a key role in the intermediary metabolism of glucose and amino acids. Serum activity levels of this enzyme are routinely used as a biomarker of liver injury caused by drug toxicity, infection, alcohol, and steatosis. A related gene on chromosome 16 encodes a putative mitochondrial alanine aminotransferase. [provided by RefSeq, Nov 2009]

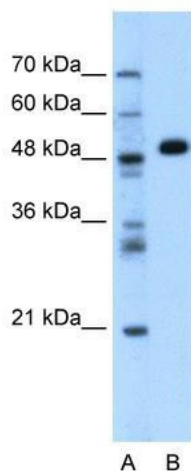
**Synonyms:** AAT1; ALT1; GPT1

**Note:** Immunogen Sequence Homology: Human: 100%; Pig: 93%; Rat: 93%; Mouse: 93%; Bovine: 93%; Guinea pig: 93%; Dog: 86%; Yeast: 79%; Zebrafish: 79%; Horse: 77%; Rabbit: 77%

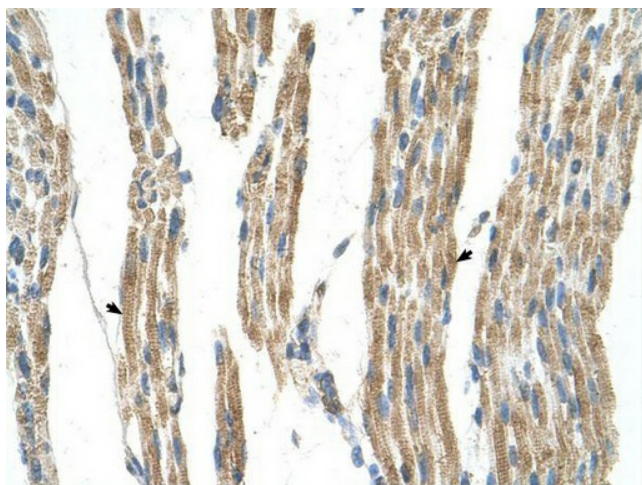
**Protein Families:** Druggable Genome

**Protein Pathways:** Alanine, aspartate and glutamate metabolism, Metabolic pathways

### Product images:



WB Suggested Anti-GPT Antibody Titration: 1.25 ug/ml; Positive Control: 293T cells lysate. GPT is supported by BioGPS gene expression data to be expressed in HEK293T



Immunohistochemistry with Fetal liver cell lysate tissue at an antibody concentration of 5.0 ug/ml using anti-GPT antibody