

Product datasheet for **TA338150**

Alanine Transaminase (GPT) Rabbit Polyclonal Antibody

Product data:

Product Type:	Primary Antibodies
Applications:	IHC, WB
Recommended Dilution:	WB, IHC
Reactivity:	Human
Host:	Rabbit
Isotype:	IgG
Clonality:	Polyclonal
Immunogen:	The immunogen for anti-GPT antibody: synthetic peptide directed towards the N terminal of human GPT. Synthetic peptide located within the following region: RRVEYAVRGPIVQRALELEQLRQGVKKPFTEVIRANIGDAQAMGQRPIT
Formulation:	Liquid. Purified antibody supplied in 1x PBS buffer with 0.09% (w/v) sodium azide and 2% sucrose. <i>Note that this product is shipped as lyophilized powder to China customers.</i>
Purification:	Protein A purified
Conjugation:	Unconjugated
Storage:	Store at -20°C as received.
Stability:	Stable for 12 months from date of receipt.
Predicted Protein Size:	55 kDa
Gene Name:	glutamic-pyruvate transaminase (alanine aminotransferase)
Database Link:	NP_005300 Entrez Gene 2875 Human P24298



[View online »](#)

Background: This gene encodes cytosolic alanine aminotransaminase 1 (ALT1); also known as glutamate-pyruvate transaminase 1. This enzyme catalyzes the reversible transamination between alanine and 2-oxoglutarate to generate pyruvate and glutamate and, therefore, plays a key role in the intermediary metabolism of glucose and amino acids. Serum activity levels of this enzyme are routinely used as a biomarker of liver injury caused by drug toxicity, infection, alcohol, and steatosis. A related gene on chromosome 16 encodes a putative mitochondrial alanine aminotransaminase. [provided by RefSeq, Nov 2009]

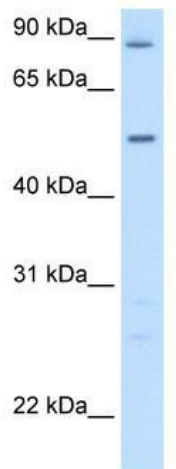
Synonyms: AAT1; ALT1; GPT1

Note: Immunogen Sequence Homology: Dog: 100%; Pig: 100%; Rat: 100%; Human: 100%; Mouse: 100%; Bovine: 100%; Guinea pig: 100%

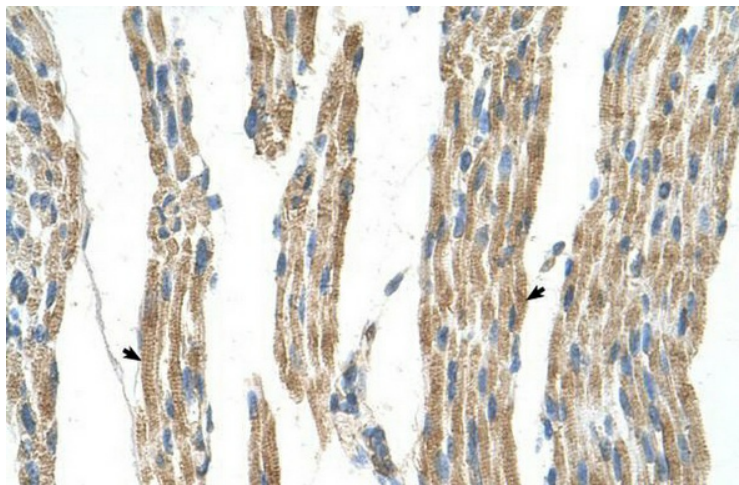
Protein Families: Druggable Genome

Protein Pathways: Alanine, aspartate and glutamate metabolism, Metabolic pathways

Product images:



WB Suggested Anti-GPT Antibody Titration: 5.0 ug/ml; Positive Control: Fetal liver cell lysate



Human Muscle