

## Product datasheet for **TA338148**

### Inhibin beta C chain (INHBC) Rabbit Polyclonal Antibody

#### Product data:

Product Type:	Primary Antibodies
Applications:	WB
Recommended Dilution:	WB
Reactivity:	Human
Host:	Rabbit
Isotype:	IgG
Clonality:	Polyclonal
Immunogen:	The immunogen for anti-INHBC antibody is: synthetic peptide directed towards the N-terminal region of Human INHBC. Synthetic peptide located within the following region: PVSRAALRTALQHLHGVPQGALLEDNREQECEIISFAETGLSTINQTRLD
Formulation:	Liquid. Purified antibody supplied in 1x PBS buffer with 0.09% (w/v) sodium azide and 2% sucrose. <i>Note that this product is shipped as lyophilized powder to China customers.</i>
Purification:	Affinity Purified
Conjugation:	Unconjugated
Storage:	Store at -20°C as received.
Stability:	Stable for 12 months from date of receipt.
Predicted Protein Size:	38 kDa
Gene Name:	inhibin beta C subunit
Database Link:	<a href="#">NP_005529</a> <a href="#">Entrez Gene 3626 Human</a> <a href="#">P55103</a>
Background:	This gene encodes the beta C chain of inhibin, a member of the TGF-beta superfamily. This subunit forms heterodimers with beta A and beta B subunits. Inhibins and activins, also members of the TGF-beta superfamily, are hormones with opposing actions and are involved in hypothalamic, pituitary, and gonadal hormone secretion, as well as growth and differentiation of various cell types.
Synonyms:	IHBC



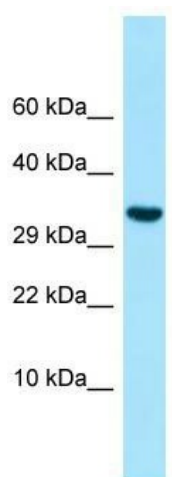
[View online »](#)

**Note:** Immunogen Sequence Homology: Human: 100%; Pig: 86%; Guinea pig: 86%

**Protein Families:** Druggable Genome, Secreted Protein

**Protein Pathways:** Cytokine-cytokine receptor interaction, TGF-beta signaling pathway

**Product images:**



Host: Rabbit; Target Name: INHBC; Sample  
Tissue: HeLa Whole Cell lysates; Antibody Dilution:  
1.0 ug/ml