

Product datasheet for TA338144

Glypican 6 (GPC6) Rabbit Polyclonal Antibody

Product data:

Product Type:	Primary Antibodies
Applications:	WB
Recommended Dilution:	WB
Reactivity:	Human
Host:	Rabbit
Isotype:	IgG
Clonality:	Polyclonal
Immunogen:	The immunogen for anti-GPC6 antibody is: synthetic peptide directed towards the N-terminal region of Human GPC6. Synthetic peptide located within the following region: AYGAKGFLADIPYQEIAGEHLRCPQEYTCCTTEMEDKLSQQSKLEFEN
Formulation:	Liquid. Purified antibody supplied in 1x PBS buffer with 0.09% (w/v) sodium azide and 2% sucrose. <i>Note that this product is shipped as lyophilized powder to China customers.</i>
Purification:	Affinity Purified
Conjugation:	Unconjugated
Storage:	Store at -20°C as received.
Stability:	Stable for 12 months from date of receipt.
Predicted Protein Size:	60 kDa
Gene Name:	glypican 6
Database Link:	NP_005699 Entrez Gene 10082 Human Q9Y625
Background:	The glypicans comprise a family of glycosylphosphatidylinositol-anchored heparan sulfate proteoglycans, and they have been implicated in the control of cell growth and cell division. The glypican encoded by this gene is a putative cell surface coreceptor for growth factors, extracellular matrix proteins, proteases and anti-proteases.
Synonyms:	OMIMD1

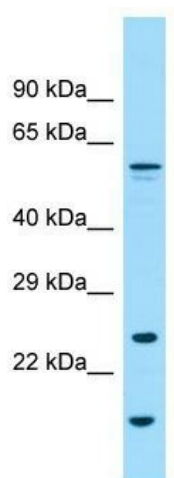


[View online »](#)

Note: Immunogen Sequence Homology: Human: 100%; Mouse: 100%; Bovine: 100%; Pig: 90%; Guinea pig: 90%; Horse: 82%

Protein Families: Druggable Genome

Product images:



WB Suggested Anti-GPC6 Antibody; Titration: 1.0 ug/ml; Positive Control: THP-1 Whole Cell