

## Product datasheet for **TA338142**

### ARPC1B Rabbit Polyclonal Antibody

#### Product data:

Product Type:	Primary Antibodies
Applications:	WB
Recommended Dilution:	WB
Reactivity:	Human
Host:	Rabbit
Isotype:	IgG
Clonality:	Polyclonal
Immunogen:	The immunogen for anti-ARPC1B antibody is: synthetic peptide directed towards the C-terminal region of Human ARPC1B. Synthetic peptide located within the following region: RERFQNLDDKKASSEGGTAAGAGLDSLHKNSVSQISVLSGGKAKCSQFCTT
Formulation:	Liquid. Purified antibody supplied in 1x PBS buffer with 0.09% (w/v) sodium azide and 2% sucrose. <i>Note that this product is shipped as lyophilized powder to China customers.</i>
Purification:	Affinity Purified
Conjugation:	Unconjugated
Storage:	Store at -20°C as received.
Stability:	Stable for 12 months from date of receipt.
Predicted Protein Size:	41 kDa
Gene Name:	actin related protein 2/3 complex subunit 1B
Database Link:	<a href="#">NP_005711</a> <a href="#">Entrez Gene 10095 Human</a> <a href="#">O15143</a>



[View online »](#)

**Background:**

This gene encodes one of seven subunits of the human Arp2/3 protein complex. This subunit is a member of the SOP2 family of proteins and is most similar to the protein encoded by gene ARPC1A. The similarity between these two proteins suggests that they both may function as p41 subunit of the human Arp2/3 complex that has been implicated in the control of actin polymerization in cells. It is possible that the p41 subunit is involved in assembling and maintaining the structure of the Arp2/3 complex. Multiple versions of the p41 subunit may adapt the functions of the complex to different cell types or developmental stages. This protein also has a role in centrosomal homeostasis by being an activator and substrate of the Aurora A kinase.

**Synonyms:**

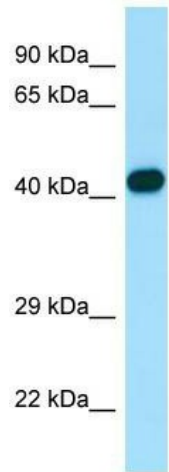
ARC41; p40-ARC; p41-ARC

**Note:**

Immunogen Sequence Homology: Pig: 100%; Human: 100%; Guinea pig: 100%; Rat: 93%; Mouse: 86%; Bovine: 86%; Dog: 79%

**Protein Pathways:**

Fc gamma R-mediated phagocytosis, Pathogenic Escherichia coli infection, Regulation of actin cytoskeleton

**Product images:**

WB Suggested Anti-ARPC1B Antibody; Titration: 1.0 ug/ml; Positive Control: Fetal Lung