

Product datasheet for **TA338141**

NTF2 (NUTF2) Rabbit Polyclonal Antibody

Product data:

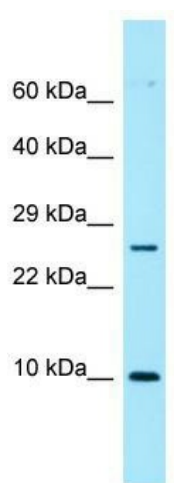
Product Type:	Primary Antibodies
Applications:	WB
Recommended Dilution:	WB
Reactivity:	Human
Host:	Rabbit
Isotype:	IgG
Clonality:	Polyclonal
Immunogen:	The immunogen for anti-NUTF2 antibody is: synthetic peptide directed towards the middle region of Human NUTF2. Synthetic peptide located within the following region: KIQHSITAQDHPDSCSIISMVVGQLKADEDPIIMGFHQMFLKNINDAW
Formulation:	Liquid. Purified antibody supplied in 1x PBS buffer with 0.09% (w/v) sodium azide and 2% sucrose.
Purification:	Affinity Purified
Conjugation:	Unconjugated
Storage:	Store at -20°C as received.
Stability:	Stable for 12 months from date of receipt.
Predicted Protein Size:	14 kDa
Gene Name:	nuclear transport factor 2
Database Link:	NP_005787 Entrez Gene 10204 Human P61970
Background:	The protein encoded by this gene is a cytosolic factor that facilitates protein transport into the nucleus. It interacts with the nuclear pore complex glycoprotein p62. This encoded protein acts at a relative late stage of nuclear protein import, subsequent to the initial docking of nuclear import ligand at the nuclear envelope. It is thought to be part of a multicomponent system of cytosolic factors that assemble at the pore complex during nuclear import.
Synonyms:	NTF-2; NTF2; PP15



[View online »](#)

Note: Immunogen Sequence Homology: Dog: 100%; Pig: 100%; Rat: 100%; Horse: 100%; Human: 100%; Mouse: 100%; Bovine: 100%; Rabbit: 100%; Zebrafish: 100%; Guinea pig: 100%

Product images:



WB Suggested Anti-NUTF2 Antibody; Titration: 1.0 ug/ml; Positive Control: ACHN Whole Cell NUTF2 is supported by BioGPS gene expression data to be expressed in ACHN