

## Product datasheet for **TA338140**

### Flotillin 1 (FLOT1) Rabbit Polyclonal Antibody

#### Product data:

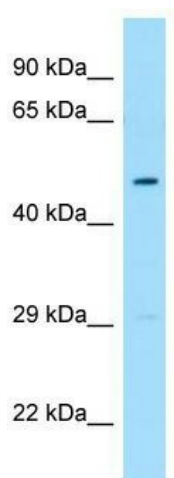
Product Type:	Primary Antibodies
Applications:	WB
Recommended Dilution:	WB
Reactivity:	Human
Host:	Rabbit
Isotype:	IgG
Clonality:	Polyclonal
Immunogen:	The immunogen for anti-FLOT1 antibody is: synthetic peptide directed towards the C-terminal region of Human FLOT1. Synthetic peptide located within the following region: QQIEEQRVQVQVVERAQQVAVQEQEIARREKELEARVRKPAEAERYKLER
Formulation:	Liquid. Purified antibody supplied in 1x PBS buffer with 0.09% (w/v) sodium azide and 2% sucrose. <i>Note that this product is shipped as lyophilized powder to China customers.</i>
Purification:	Affinity Purified
Conjugation:	Unconjugated
Storage:	Store at -20°C as received.
Stability:	Stable for 12 months from date of receipt.
Predicted Protein Size:	47 kDa
Gene Name:	flotillin 1
Database Link:	<a href="#">NP_005794</a> <a href="#">Entrez Gene 10211 Human O75955</a>
Background:	Caveolae are small domains on the inner cell membrane involved in vesicular trafficking and signal transduction. FLOT1 encodes a caveolae-associated, integral membrane protein. The function of flotillin 1 has not been determined.
Synonyms:	flotillin 1; integral membrane component of caveolae; OTTHUMP00000029208
Note:	Immunogen Sequence Homology: Dog: 100%; Pig: 100%; Horse: 100%; Human: 100%; Bovine: 100%; Rat: 93%; Mouse: 93%; Rabbit: 93%; Guinea pig: 86%; Zebrafish: 85%



[View online »](#)

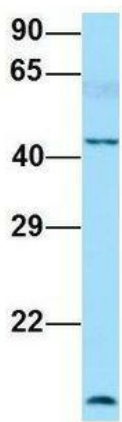
Protein Pathways: Insulin signaling pathway

**Product images:**



WB Suggested Anti-FLOT1 Antibody; Titration: 1.0 ug/ml; Positive Control: Fetal Heart

**FLOT1**



Rabbit Anti-FLOT1  
 Sample Type: Human Fetal Lung  
 Antibody Concentration: 1ug/mL

Host: Rabbit; Target Name: FLOT1; Sample Tissue: Human Fetal Lung; Antibody Dilution: 1.0 ug/ml