

Product datasheet for **TA338137**

CDC42 Binding Protein Kinase Beta (CDC42BPB) Rabbit Polyclonal Antibody

Product data:

Product Type:	Primary Antibodies
Applications:	WB
Recommended Dilution:	WB
Reactivity:	Human
Host:	Rabbit
Isotype:	IgG
Clonality:	Polyclonal
Immunogen:	The immunogen for anti-CDC42BPB antibody is: synthetic peptide directed towards the C-terminal region of Human CDC42BPB. Synthetic peptide located within the following region: GLKLPDFQDSIFEYFNTAPLAHDLTFRSSASEQETQAPKPEASPSMSVA
Formulation:	Liquid. Purified antibody supplied in 1x PBS buffer with 0.09% (w/v) sodium azide and 2% sucrose.
Purification:	Affinity Purified
Conjugation:	Unconjugated
Storage:	Store at -20°C as received.
Stability:	Stable for 12 months from date of receipt.
Predicted Protein Size:	194 kDa
Gene Name:	CDC42 binding protein kinase beta
Database Link:	NP_006026 Entrez Gene 9578 Human Q9Y5S2
Background:	This gene encodes a member of the serine/threonine protein kinase family. The encoded protein contains a Cdc42/Rac-binding p21 binding domain resembling that of PAK kinase. The kinase domain of this protein is most closely related to that of myotonic dystrophy kinase-related ROK. Studies of the similar gene in rat suggested that this kinase may act as a downstream effector of Cdc42 in cytoskeletal reorganization.
Synonyms:	MRCKB

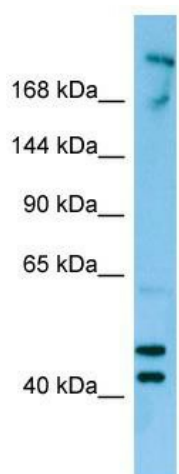


[View online »](#)

Note: Immunogen Sequence Homology: Horse: 100%; Human: 100%; Pig: 93%; Rat: 93%; Bovine: 93%; Dog: 92%; Rabbit: 86%; Mouse: 83%

Protein Families: Druggable Genome, Protein Kinase

Product images:



WB Suggested Anti-CDC42BPB Antibody;
Titration: 1.0 ug/ml; Positive Control: MCF7 Whole
Cell CDC42BPB is supported by BioGPS gene
expression data to be expressed in MCF7