

Product datasheet for **TA338136**

Laminin (LAMC3) Rabbit Polyclonal Antibody

Product data:

Product Type:	Primary Antibodies
Applications:	WB
Recommended Dilution:	WB
Reactivity:	Human
Host:	Rabbit
Isotype:	IgG
Clonality:	Polyclonal
Immunogen:	The immunogen for anti-LAMC3 antibody is: synthetic peptide directed towards the C-terminal region of Human LAMC3. Synthetic peptide located within the following region: ERMLGNAAPLSSSAKKKGREAEVLAKDSAKLAKALLRERKQAHRRASRLT
Formulation:	Liquid. Purified antibody supplied in 1x PBS buffer with 0.09% (w/v) sodium azide and 2% sucrose. <i>Note that this product is shipped as lyophilized powder to China customers.</i>
Purification:	Affinity Purified
Conjugation:	Unconjugated
Storage:	Store at -20°C as received.
Stability:	Stable for 12 months from date of receipt.
Predicted Protein Size:	140 kDa
Gene Name:	laminin subunit gamma 3
Database Link:	NP_006050 Entrez Gene 10319 Human Q9Y6N6



[View online »](#)

Background:

Laminins, a family of extracellular matrix glycoproteins, are the major noncollagenous constituent of basement membranes. They have been implicated in a wide variety of biological processes including cell adhesion, differentiation, migration, signaling, neurite outgrowth and metastasis. Laminins are composed of 3 non identical chains: laminin alpha, beta and gamma (formerly A, B1, and B2, respectively) and they form a cruciform structure consisting of 3 short arms, each formed by a different chain, and a long arm composed of all 3 chains. Each laminin chain is a multidomain protein encoded by a distinct gene.

Synonyms:

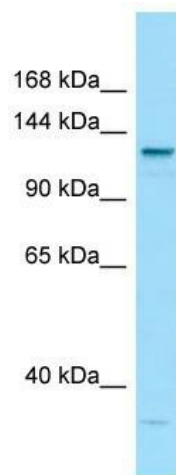
OCCM

Note:

Immunogen Sequence Homology: Human: 100%; Pig: 92%; Horse: 92%; Bovine: 92%; Rabbit: 83%

Protein Pathways:

ECM-receptor interaction, Focal adhesion, Pathways in cancer, Small cell lung cancer

Product images:

WB Suggested Anti-LAMC3 Antibody; Titration: 1.0 ug/ml; Positive Control: Hela Whole Cell
LAMC3 is supported by BioGPS gene expression data to be expressed in HeLa