

## Product datasheet for **TA338135**

### CRISP3 Rabbit Polyclonal Antibody

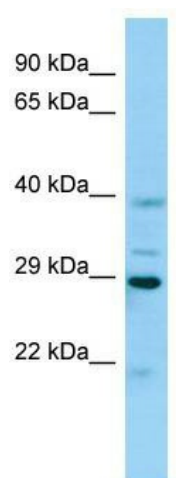
#### Product data:

Product Type:	Primary Antibodies
Applications:	WB
Recommended Dilution:	WB
Reactivity:	Human
Host:	Rabbit
Isotype:	IgG
Clonality:	Polyclonal
Immunogen:	The immunogen for anti-CRISP3 antibody is: synthetic peptide directed towards the N-terminal region of Human CRISP3. Synthetic peptide located within the following region: PARNMLKMEWNKEAAANAQKWANQCNYRHSNPKDRMTSLKCGENLYMSSA
Formulation:	Liquid. Purified antibody supplied in 1x PBS buffer with 0.09% (w/v) sodium azide and 2% sucrose. <i>Note that this product is shipped as lyophilized powder to China customers.</i>
Purification:	Affinity Purified
Conjugation:	Unconjugated
Storage:	Store at -20°C as received.
Stability:	Stable for 12 months from date of receipt.
Predicted Protein Size:	27 kDa
Gene Name:	cysteine rich secretory protein 3
Database Link:	<a href="#">NP_006052</a> <a href="#">Entrez Gene 10321 Human P54108</a>
Background:	The function of this protein remains unknown.
Synonyms:	Aeg2; CRISP-3; CRS3; dJ442L6.3; SGP28
Note:	Immunogen Sequence Homology: Human: 100%; Yeast: 77%
Protein Families:	Secreted Protein



[View online »](#)

## Product images:



WB Suggested Anti-CRISP3 Antibody; Titration:  
1.0 ug/ml; Positive Control: ACHN Whole Cell