

Product datasheet for **TA338134**

PRB3 Rabbit Polyclonal Antibody

Product data:

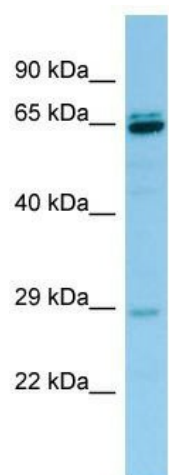
Product Type:	Primary Antibodies
Applications:	WB
Recommended Dilution:	WB
Reactivity:	Human
Host:	Rabbit
Isotype:	IgG
Clonality:	Polyclonal
Immunogen:	The immunogen for anti-PRB3 antibody is: synthetic peptide directed towards the middle region of Human PRB3. Synthetic peptide located within the following region: PGKPEGPPPQGGNQSQGPPPRPGKPEGPPSQGGNKPQGPPPHPGKPGQGGP
Formulation:	Liquid. Purified antibody supplied in 1x PBS buffer with 0.09% (w/v) sodium azide and 2% sucrose. <i>Note that this product is shipped as lyophilized powder to China customers.</i>
Purification:	Affinity Purified
Conjugation:	Unconjugated
Storage:	Store at -20°C as received.
Stability:	Stable for 12 months from date of receipt.
Predicted Protein Size:	29 kDa
Gene Name:	proline-rich protein BstNI subfamily 3
Database Link:	NP_006240 Entrez Gene 5544 Human
Background:	The protein encoded by this gene is a proline-rich salivary protein. It is a major constituent of parotid saliva. This protein is proposed to act as a bacterial receptor. This gene and five other genes that also encode salivary proline-rich proteins (PRPs), as well as a gene encoding a lacrimal gland PRP, form a PRP gene cluster in the chromosomal 12p13 region.
Synonyms:	G1; PRG
Note:	Immunogen Sequence Homology: Human: 100%; Rat: 83%



[View online »](#)

Protein Families: Druggable Genome

Product images:



WB Suggested Anti-PRB3 Antibody; Titration: 1.0 ug/ml; Positive Control: Hela Whole Cell