

## Product datasheet for TA338133

### PRH1 Rabbit Polyclonal Antibody

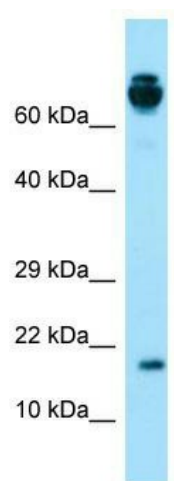
#### Product data:

Product Type:	Primary Antibodies
Applications:	WB
Recommended Dilution:	WB
Reactivity:	Human
Host:	Rabbit
Isotype:	IgG
Clonality:	Polyclonal
Immunogen:	The immunogen for anti-PRH2 antibody is: synthetic peptide directed towards the middle region of Human PRH2. Synthetic peptide located within the following region: PQQGGQQQGPPPPQGKPPQGGHPPPPQGRPQGGPPQGGHPRPPRG
Formulation:	Liquid. Purified antibody supplied in 1x PBS buffer with 0.09% (w/v) sodium azide and 2% sucrose.
Purification:	Affinity Purified
Conjugation:	Unconjugated
Storage:	Store at -20°C as received.
Stability:	Stable for 12 months from date of receipt.
Predicted Protein Size:	18 kDa
Gene Name:	proline-rich protein HaeIII subfamily 1
Database Link:	<a href="#">NP_006241</a> <a href="#">Entrez Gene 5554 Human</a> <a href="#">P02810</a>
Background:	PRP's act as highly potent inhibitors of crystal growth of calcium phosphates. They provide a protective and reparative environment for dental enamel which is important for the integrity of the teeth.
Synonyms:	PA
Note:	Immunogen Sequence Homology: Human: 100%; Yeast: 91%; Rat: 87%; Rabbit: 85%; Mouse: 80%; Goat: 76%


[View online »](#)

Protein Families: Druggable Genome

## Product images:



Host: Rabbit; Target Name: PRH2; Sample Tissue: Fetal Lung lysates; Antibody Dilution: 1.0 ug/ml