

Product datasheet for **TA338129**

C1orf2 (FAM189B) Rabbit Polyclonal Antibody

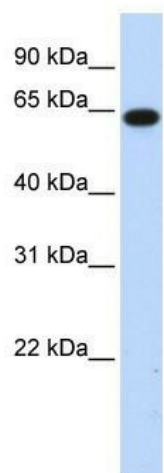
Product data:

Product Type:	Primary Antibodies
Applications:	WB
Recommended Dilution:	WB
Reactivity:	Human
Host:	Rabbit
Isotype:	IgG
Clonality:	Polyclonal
Immunogen:	The immunogen for anti-C1orf2 antibody: synthetic peptide directed towards the N terminal of human C1orf2. Synthetic peptide located within the following region: PLLRPCESGQELKVAPNSTCDEARGALKNLLFSVCGLTICAAIICTLSA
Formulation:	Liquid. Purified antibody supplied in 1x PBS buffer with 0.09% (w/v) sodium azide and 2% sucrose. <i>Note that this product is shipped as lyophilized powder to China customers.</i>
Purification:	Affinity Purified
Conjugation:	Unconjugated
Storage:	Store at -20°C as received.
Stability:	Stable for 12 months from date of receipt.
Predicted Protein Size:	71 kDa
Gene Name:	family with sequence similarity 189 member B
Database Link:	NP_006580 Entrez Gene 10712 Human P81408
Background:	The exact function of C1orf2 remains unknown.
Synonyms:	C1orf2; COTE1
Note:	Immunogen Sequence Homology: Dog: 100%; Pig: 100%; Human: 100%; Horse: 93%; Rabbit: 93%; Rat: 87%; Mouse: 87%; Bovine: 87%; Guinea pig: 80%
Protein Families:	Transmembrane



[View online »](#)

Product images:



WB Suggested Anti-C1orf2 Antibody Titration: 0.2-1 ug/ml; ELISA Titer: 1:12500; Positive Control: Transfected 293T