

## Product datasheet for **TA338128**

### SA2 (STAG2) Rabbit Polyclonal Antibody

#### Product data:

Product Type:	Primary Antibodies
Applications:	WB
Recommended Dilution:	WB
Reactivity:	Human
Host:	Rabbit
Isotype:	IgG
Clonality:	Polyclonal
Immunogen:	The immunogen for anti-STAG2 antibody is: synthetic peptide directed towards the C-terminal region of Human STAG2. Synthetic peptide located within the following region: LLAGDDDTMSVISGSSRGSTVRSKSKPSTGKRKVEGMQLSLTEESS
Formulation:	Liquid. Purified antibody supplied in 1x PBS buffer with 0.09% (w/v) sodium azide and 2% sucrose. <i>Note that this product is shipped as lyophilized powder to China customers.</i>
Purification:	Affinity Purified
Conjugation:	Unconjugated
Storage:	Store at -20°C as received.
Stability:	Stable for 12 months from date of receipt.
Predicted Protein Size:	141 kDa
Gene Name:	stromal antigen 2
Database Link:	<a href="#">NP_006594</a> <a href="#">Entrez Gene 10735 Human</a> <a href="#">Q8N3U4</a>
Background:	STAG2 is a component of cohesin complex, a complex required for the cohesion of sister chromatids after DNA replication. The cohesin complex apparently forms a large proteinaceous ring within which sister chromatids can be trapped. At anaphase, the complex is cleaved and dissociates from chromatin, allowing sister chromatids to segregate. The cohesin complex may also play a role in spindle pole assembly during mitosis.
Synonyms:	bA517O1.1; SA-2; SA2; SCC3B

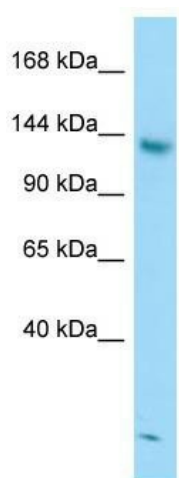


[View online »](#)

**Note:** Immunogen Sequence Homology: Dog: 100%; Pig: 100%; Rat: 100%; Horse: 100%; Human: 100%; Mouse: 100%; Bovine: 100%; Rabbit: 100%; Zebrafish: 79%

**Protein Pathways:** Cell cycle

**Product images:**



WB Suggested Anti-STAG2 Antibody; Titration: 1.0 ug/ml; Positive Control: Jurkat Whole Cell STAG2 is strongly supported by BioGPS gene expression data to be expressed in Human Jurkat cells