

Product datasheet for **TA338126**

WNK2 Rabbit Polyclonal Antibody

Product data:

Product Type:	Primary Antibodies
Applications:	WB
Recommended Dilution:	WB
Reactivity:	Human
Host:	Rabbit
Isotype:	IgG
Clonality:	Polyclonal
Immunogen:	The immunogen for anti-WNK2 antibody is: synthetic peptide directed towards the N-terminal region of Human WNK2. Synthetic peptide located within the following region: APAPDGGPREEAAATVRKEDEGAAEAKPEPGRTRRDEPEEEEDDEDLKA
Formulation:	Liquid. Purified antibody supplied in 1x PBS buffer with 0.09% (w/v) sodium azide and 2% sucrose. <i>Note that this product is shipped as lyophilized powder to China customers.</i>
Purification:	Affinity Purified
Conjugation:	Unconjugated
Storage:	Store at -20°C as received.
Stability:	Stable for 12 months from date of receipt.
Predicted Protein Size:	234 kDa
Gene Name:	WNK lysine deficient protein kinase 2
Database Link:	NP_006639 Entrez Gene 65268 Human Q9Y3S1
Background:	The protein encoded by this gene is a cytoplasmic serine-threonine kinase that contains cysteine in place of the lysine found at the conserved ATP-binding location in subdomain II of protein kinases. Since this protein does not have kinase activity, it is possible that another lysine in the kinase subdomain I can substitute for the missing conserved lysine.
Synonyms:	NY-CO-43; OKcl.13; P; PRKWNK2; SDCCAG43

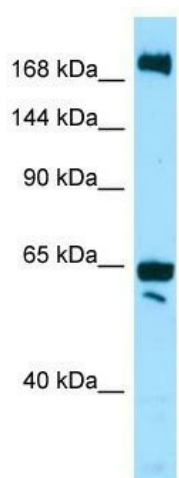


[View online »](#)

Note: Immunogen Sequence Homology: Human: 100%; Horse: 92%; Pig: 86%; Rat: 86%; Mouse: 86%; Guinea pig: 86%; Dog: 79%

Protein Families: Druggable Genome, Protein Kinase

Product images:



WB Suggested Anti-WNK2 Antibody; Titration: 1.0 ug/ml; Positive Control: 721_B Whole Cell