

Product datasheet for **TA338125**

CD300C Rabbit Polyclonal Antibody

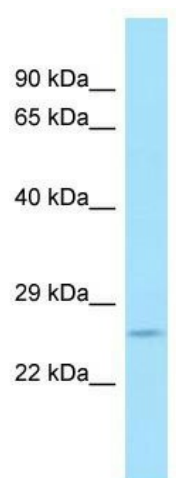
Product data:

Product Type:	Primary Antibodies
Applications:	WB
Recommended Dilution:	WB
Reactivity:	Human
Host:	Rabbit
Isotype:	IgG
Clonality:	Polyclonal
Immunogen:	The immunogen for anti-CD300C antibody is: synthetic peptide directed towards the C-terminal region of Human CD300C. Synthetic peptide located within the following region: MGTSGPPTKLPVHTWPSVTRKDSPEPSHPGSLFSNVRLLLLVLELPLL
Formulation:	Liquid. Purified antibody supplied in 1x PBS buffer with 0.09% (w/v) sodium azide and 2% sucrose. <i>Note that this product is shipped as lyophilized powder to China customers.</i>
Purification:	Affinity Purified
Conjugation:	Unconjugated
Storage:	Store at -20°C as received.
Stability:	Stable for 12 months from date of receipt.
Predicted Protein Size:	23 kDa
Gene Name:	CD300c molecule
Database Link:	NP_006669 Entrez Gene 10871 Human Q08708
Background:	The CMRF35 antigen, which was identified by reactivity with a monoclonal antibody, is present on monocytes, neutrophils, and some T and B lymphocytes.
Synonyms:	CLM-6; CMRF-35; CMRF-35A; CMRF35; CMRF35-A1; CMRF35A; CMRF35A1; IGSF16; LIR
Note:	Immunogen Sequence Homology: Human: 100%
Protein Families:	Druggable Genome, Transmembrane



[View online »](#)

Product images:



WB Suggested Anti-CD300C Antibody; Titration:
1.0 ug/ml; Positive Control: 721_B Whole Cell