

Product datasheet for **TA338124**

EBNA1 binding protein 2 (EBNA1BP2) Rabbit Polyclonal Antibody

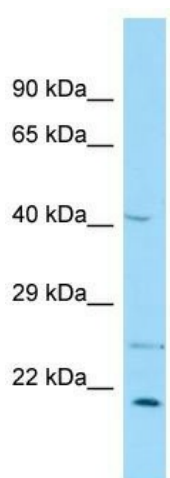
Product data:

Product Type:	Primary Antibodies
Applications:	WB
Recommended Dilution:	WB
Reactivity:	Human
Host:	Rabbit
Isotype:	IgG
Clonality:	Polyclonal
Immunogen:	The immunogen for anti-EBNA1BP2 antibody is: synthetic peptide directed towards the middle region of Human EBNA1BP2. Synthetic peptide located within the following region: VTLGPVPEIGGSEAPAPQNKDQKAVDPEDDFQREMSFYRQAQAAVLAVLP
Formulation:	Liquid. Purified antibody supplied in 1x PBS buffer with 0.09% (w/v) sodium azide and 2% sucrose. <i>Note that this product is shipped as lyophilized powder to China customers.</i>
Purification:	Affinity Purified
Conjugation:	Unconjugated
Storage:	Store at -20°C as received.
Stability:	Stable for 12 months from date of receipt.
Predicted Protein Size:	39 kDa
Gene Name:	EBNA1 binding protein 2
Database Link:	NP_006815 Entrez Gene 10969 Human Q99848
Background:	EBNA1BP2 is required for the processing of the 27S pre-rRNA.
Synonyms:	EBP2; NOBP; P40
Note:	Immunogen Sequence Homology: Human: 100%



[View online »](#)

Product images:



Host: Rabbit

Target Name: EBNA1BP2

Sample Tissue: COLO205 Cell Lysate

Antibody Dilution: 1.0 μ g/ml

Host: Rabbit; Target Name: EBNA1BP2; Sample Tissue: COLO205 Whole Cell lysates; Antibody Dilution: 1.0 ug/ml