

Product datasheet for **TA338122**

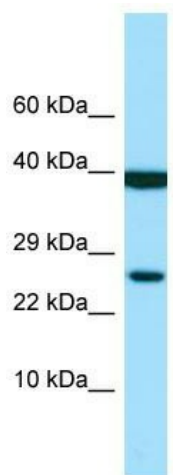
LILRA1 Rabbit Polyclonal Antibody

Product data:

Product Type:	Primary Antibodies
Applications:	WB
Recommended Dilution:	WB
Reactivity:	Human
Host:	Rabbit
Isotype:	IgG
Clonality:	Polyclonal
Immunogen:	The immunogen for anti-LILRA1 antibody is: synthetic peptide directed towards the middle region of Human LILRA1. Synthetic peptide located within the following region: FGSFILCKEGEDEHPQCLNSQPRTHGWSRAIFSVGPVSPSRRWSYRCYAY
Formulation:	Liquid. Purified antibody supplied in 1x PBS buffer with 0.09% (w/v) sodium azide and 2% sucrose.
Purification:	Affinity Purified
Conjugation:	Unconjugated
Storage:	Store at -20°C as received.
Stability:	Stable for 12 months from date of receipt.
Predicted Protein Size:	31 kDa
Gene Name:	leukocyte immunoglobulin like receptor A1
Database Link:	NP_006854 Entrez Gene 11024 Human O75019
Background:	LILRA1 may act as receptor for class I MHC antigens.
Synonyms:	CD85I; LIR-6; LIR6
Note:	Immunogen Sequence Homology: Human: 100%



[View online »](#)

Product images:


Host: Rabbit

Target Name: LILRA1

Sample Tissue: MDA-MB-435S Cell Lysate

Antibody Dilution: 1.0µg/ml

Host: Rabbit; Target Name: LILRA1; Sample Tissue: MDA-MB-435S Whole Cell lysates; Antibody Dilution: 1.0 ug/ml LILRA1 is strongly supported by BioGPS gene expression data to be expressed in Human MDA-MB435 cells