

Product datasheet for **TA338121**

LILRA3 Rabbit Polyclonal Antibody

Product data:

Product Type:	Primary Antibodies
Applications:	WB
Recommended Dilution:	WB
Reactivity:	Human
Host:	Rabbit
Isotype:	IgG
Clonality:	Polyclonal
Immunogen:	The immunogen for anti-LILRA3 antibody is: synthetic peptide directed towards the C-terminal region of Human LILRA3. Synthetic peptide located within the following region: AHAGTYRCYGSLSSNPYLLTHPSDPLELVSGAAETLSPQNKSDSKAGE
Formulation:	Liquid. Purified antibody supplied in 1x PBS buffer with 0.09% (w/v) sodium azide and 2% sucrose. <i>Note that this product is shipped as lyophilized powder to China customers.</i>
Purification:	Affinity Purified
Conjugation:	Unconjugated
Storage:	Store at -20°C as received.
Stability:	Stable for 12 months from date of receipt.
Predicted Protein Size:	45 kDa
Gene Name:	leukocyte immunoglobulin like receptor A3
Database Link:	NP_006856 Entrez Gene 11026 Human Q8N6C8



[View online »](#)

Background:

Leukocyte Ig-like receptors (LIRs) are a family of immunoreceptors expressed predominantly on monocytes and B cells and at lower levels on dendritic cells and natural killer (NK) cells. All LIRs in subfamily B have an inhibitory function. LIRs in subfamily A, with short cytoplasmic domains lacking an immunoreceptor tyrosine-based inhibitory motif (ITIM) and with transmembrane regions containing a charged arginine residue, may initiate stimulatory cascades. One member of subfamily A (LILRA3) lacks a transmembrane region and is presumed to be a soluble receptor.

Synonyms:

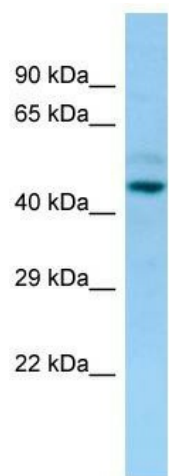
CD85E; HM31; HM43; ILT-6; ILT6; LIR-4; LIR4

Note:

Immunogen Sequence Homology: Human: 100%; Bovine: 100%

Protein Families:

Secreted Protein

Product images:

WB Suggested Anti-LILRA3 Antibody; Titration: 1.0 ug/ml; Positive Control: OVCAR-3 Whole Cell
LILRA3 is supported by BioGPS gene expression data to be expressed in OVCAR3