

Product datasheet for **TA338118**

DUSP14 Rabbit Polyclonal Antibody

Product data:

Product Type:	Primary Antibodies
Applications:	WB
Recommended Dilution:	WB
Reactivity:	Human
Host:	Rabbit
Isotype:	IgG
Clonality:	Polyclonal
Immunogen:	The immunogen for anti-DUSP14 antibody is: synthetic peptide directed towards the C-terminal region of Human DUSP14. Synthetic peptide located within the following region: PVIRPNVGFWRQLIDYERQLFGKSTVKMVQTPYGIVPDVYEKESRHLMPY
Formulation:	Liquid. Purified antibody supplied in 1x PBS buffer with 0.09% (w/v) sodium azide and 2% sucrose. <i>Note that this product is shipped as lyophilized powder to China customers.</i>
Purification:	Affinity Purified
Conjugation:	Unconjugated
Storage:	Store at -20°C as received.
Stability:	Stable for 12 months from date of receipt.
Predicted Protein Size:	22 kDa
Gene Name:	dual specificity phosphatase 14
Database Link:	NP_008957 Entrez Gene 11072 Human O95147
Background:	Dual-specificity phosphatases (DUSPs) constitute a large heterogeneous subgroup of the type I cysteine-based protein-tyrosine phosphatase superfamily. DUSPs are characterized by their ability to dephosphorylate both tyrosine and serine/threonine residues. They have been implicated as major modulators of critical signaling pathways. DUSP14 contains the consensus DUSP C-terminal catalytic domain but lacks the N-terminal CH2 domain found in the MKP (mitogen-activated protein kinase phosphatase) class of DUSPs.



[View online »](#)

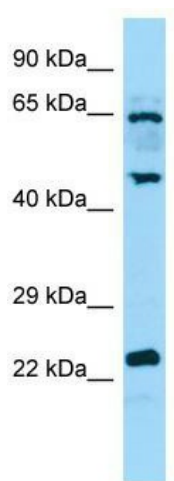
Synonyms: MKP-L; MKP6

Note: Immunogen Sequence Homology: Dog: 100%; Pig: 100%; Rat: 100%; Human: 100%; Bovine: 100%; Rabbit: 100%; Horse: 93%; Mouse: 93%; Guinea pig: 93%; Yeast: 92%

Protein Families: Druggable Genome, Phosphatase

Protein Pathways: MAPK signaling pathway

Product images:



WB Suggested Anti-DUSP14 Antibody; Titration: 1.0 ug/ml; Positive Control: Placenta