

Product datasheet for **TA338114**

EMILIN1 Rabbit Polyclonal Antibody

Product data:

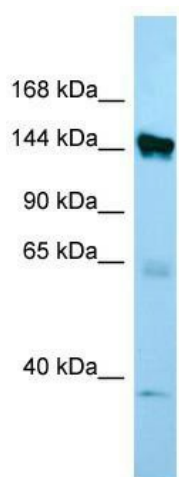
Product Type:	Primary Antibodies
Applications:	WB
Recommended Dilution:	WB
Reactivity:	Human
Host:	Rabbit
Isotype:	IgG
Clonality:	Polyclonal
Immunogen:	The immunogen for anti-EMILIN1 antibody is: synthetic peptide directed towards the C-terminal region of Human EMILIN1. Synthetic peptide located within the following region: QGADLADLGATKDRIISEINRLQQEATEHATESEERFRGLEEGQAQAGQC
Formulation:	Liquid. Purified antibody supplied in 1x PBS buffer with 0.09% (w/v) sodium azide and 2% sucrose. <i>Note that this product is shipped as lyophilized powder to China customers.</i>
Purification:	Affinity Purified
Conjugation:	Unconjugated
Storage:	Store at -20°C as received.
Stability:	Stable for 12 months from date of receipt.
Predicted Protein Size:	2 kDa
Gene Name:	elastin microfibril interfacier 1
Database Link:	NP_008977 Entrez Gene 11117 Human Q9Y6C2
Background:	This gene encodes an extracellular matrix glycoprotein that is characterized by an N-terminal microfibril interface domain, a coiled-coiled alpha-helical domain, a collagenous domain and a C-terminal globular C1q domain. The encoded protein associates with elastic fibers at the interface between elastin and microfibrils and may play a role in the development of elastic tissues including large blood vessels, dermis, heart and lung.
Synonyms:	EMI; EMILIN; gp115



[View online »](#)

Note: Immunogen Sequence Homology: Dog: 100%; Pig: 100%; Horse: 100%; Human: 100%; Bovine: 100%; Rabbit: 100%; Rat: 93%; Mouse: 93%; Guinea pig: 93%

Product images:



WB Suggested Anti-EMILIN1 Antibody; Titration: 1.0 ug/ml; Positive Control: MCF7 Whole Cell